



E3

ALUMINIUM COMPOSITE PANELS



Feel the essence of
Nature in every shade



Volume - IV



Success - at E3 Group is all about a question with the right combinations: Where delighting consumers sparks imagination, curiosity arouses creativity, and innovation provides opportunities. Together we break new ground and dare to create surprising products, repeatedly causing the observer to marvel at our creations. That is our unifying mission.

E3 Group is the leading manufacturer of interior and exterior products with more than 6000 dealers network in PAN INDIA. E3 Facilities are fully equipped with state-of-the-art technology and modern infrastructure. E3 believes in Made in India world-class quality products by "Delivering promise and exceeding expectations".

E3 GROUP is the Leading Manufacturer of

- ACP / HPL
- PVC Laminates
- Artificial Grass
- PVC Edge Band Tapes
- Clads Seamless Panel
- Decorative Laminates
- Polycarbonate Sheets
- Exterior WPE clads
- Acrylic Laminates & Panels
- Exterior ACP Clads
- Modular Kitchen & Wardrobes
- MDF
- Plywood
- Exterior WPE Decking



Welcome To E3 ACP/HPL

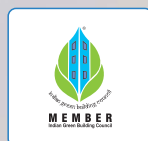
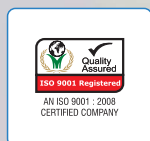
When it's time to give your design a new dimension, E3 Panels offer the flexibility and character you need. Aluminium Composite Panel (ACP) is considered to be one of the most durable, decorative surface materials available and boasts enhanced performance properties. It is produced by sandwiching layers of aluminum foil and LDPE and fusing them together under intense heat and pressure. The resulting product is strong, waterproof & available in a diverse range of decors to create a contemporary cost effective rainscreen facade.

A versatile product, E3 Aluminium Composite Panels (ACP) is designed with superior Anti-Fade and Anti-Scratch Technology. You can also, add some shine to your next project, from our extensive range design & finishes to choose from with enduring dedication to quality.

"As our name suggests E3 is elegant, everlasting & economical."

THICKNESS	STANDARD SHEET SIZE	
3mm, 4mm, 6mm	2440mm x 1220mm	3050mm x 1220mm
	3660mm x 1220mm	2440mm x 1525mm

Product certifications & approvals:



Features

Some striking characteristics of E3 Aluminium Composite Panels



Waterproof



Easy to Install



Durability



Termite Proof



Anti-Scratch Technology



Swelling or Shrinkage Free



ENVIRONMENT FRIENDLY



Wide Range of Colours & Patterns



90° Bendable



Light Weight



Easy to Clean



UV Resistant

We are there where you are!!

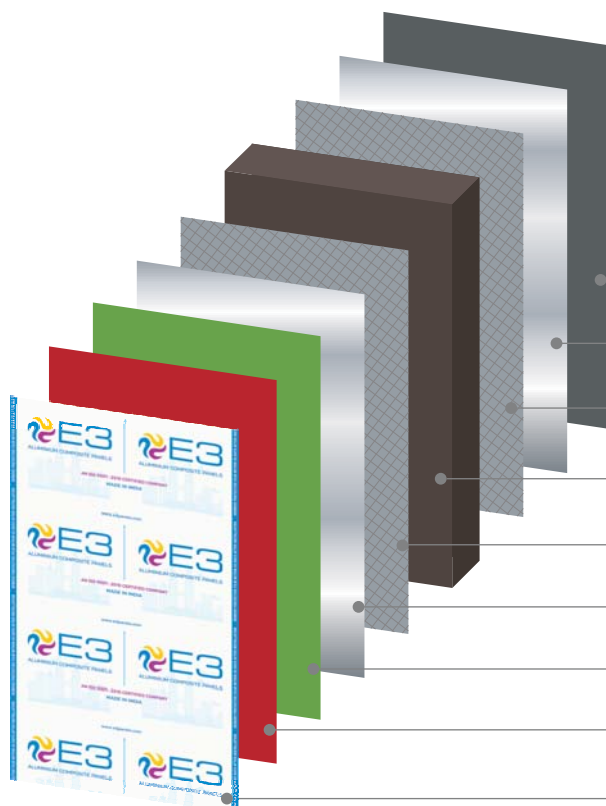
E3 is a industry leader with borderless availability. Connected by a strong network of professionals who strive to provide quality services & solutions, we strive to make the availability of the architectural products simple yet accessible for all. In a short span we spread across the length and breadth of the nation.

Applications	OUTDOOR CLADDING	ATTIC CLADDING	RAFTERS
	GATE ELEVATION	LOUVERS	CEILING
	BALCONY CLADDING	CANOPY	FENCES
	WALL CLADDING	PERGOLA	RAILING



Variants

- Italian Stone _____
- Anti-Scratch _____
- Timber Wood _____
- Sand Series _____
- Pebbles _____
- Sparkle / Mirror / Brush _____
- Gloss _____
- High Gloss _____
- Pastels / Metallic _____



Composition

- Service Coating
- Aluminium Skin (Bottom)
- Adhesive Film
- Polyethylene Core
- Adhesive Film
- Aluminium Skin (Top)
- Primer
- AFT & AST Coating
- Protective Film

Timeless *Elegance*

ITALIAN STONE



E : 612
GRAPHITE STONE



E : 613
ALASKA STONE



E : 615
COPPER STONE



E : 616
TURKISH STONE





E : 15
NOVACENTO PINE



ANTI SCRATCH



E : 16
AMERICAN OAK



ANTI-SCRATCH



E : 17
RUSTIC WALNUT



E : 18
GHANA WALNUT



E : 20
ROYAL TEAK



E : 21
COFFEE BEAN



E : 22
CAFFE BRAZILIAN



E : 23
BRAZILLIAN TEAK



ANTI-SCRATCH



E : 24
BALINESE OAK



E : 25
TROPICAL TEAK



E : 27
RUGGED MAPLE



EI : 31
VALCANIC OAK



E : 32
GOLDEN TEAK



E : 34
NAGPUR TEAK





E : 36
INDONESIA TEAK



E : 37
TIGER TEAK



Nature's
Beauty in Wood



E : 10
BURMA TEAK



TIMBER WOOD



E : 01
EBONY



TIMBER WOOD



E : 02
TINEO



E : 06
AMERICAN WENGE



E : 07
SAIM TEAK



E : 08
LAUREL WOOD



E : 11
SAPELI



E : 13
BLACK EBONY



TIMBER WOOD



E : 14
ROSE WOOD



E : 35
NEW MAHAGONI



Beach
Serenity

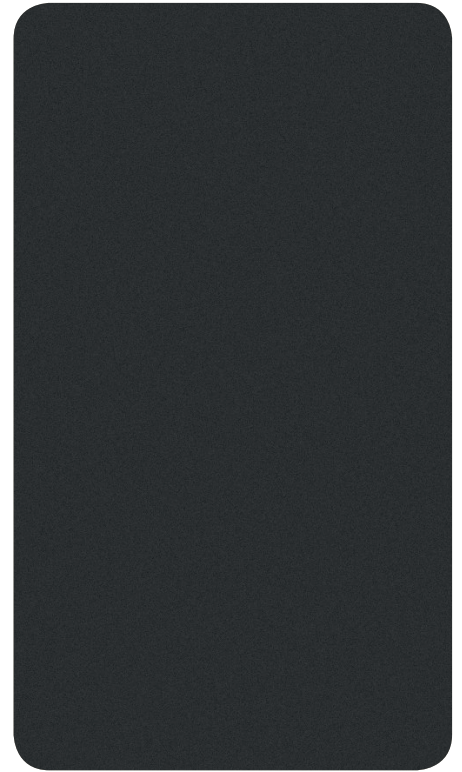


SAND SERIES

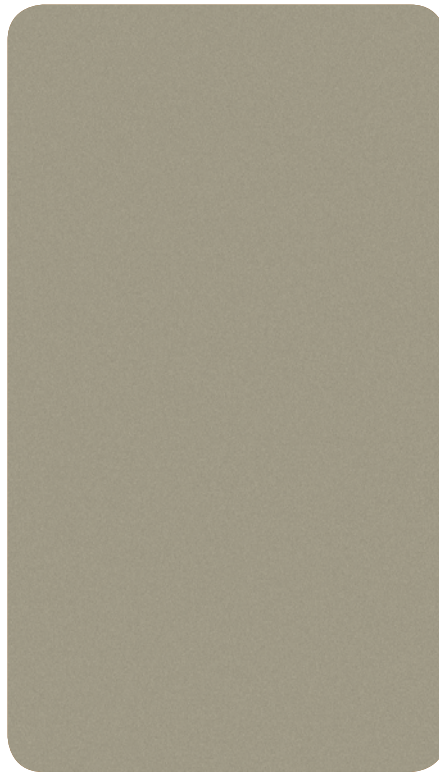
SAND SERIES



EIS : 902
SHADOW GREY



ES : 904
BEIGE SAND



EIS : 903
DESERT SAND





E : 610
EUROPEAN STATUARIO



PEBBLES



E : 603
BROWN FIRE



PEBBLES



E : 605
SOFT PERLATO



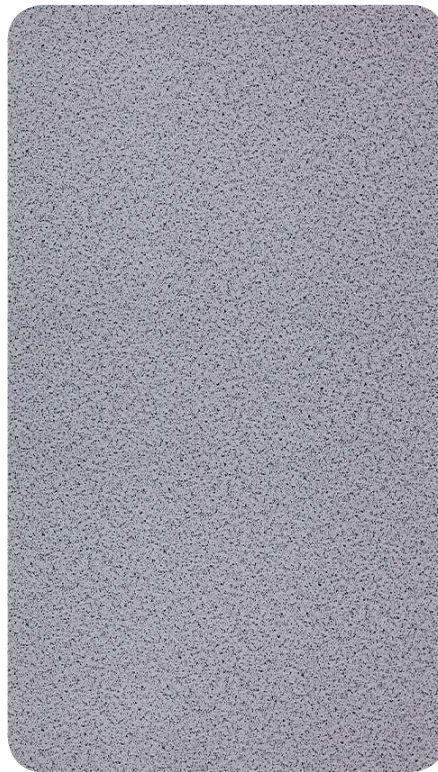
E : 606
DARK EMPRADOR



E : 607
MOLTEN GRANITE



E I : 619
PEARL BROWN



E I : 617
PEARL WHITE



E I : 618
PEARL BLACK



Spark of Inspiration

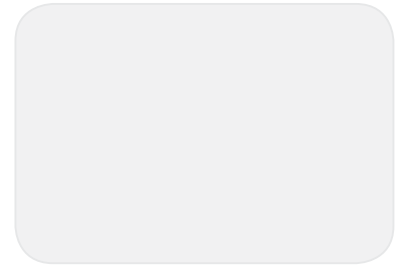
SPARKLE / MIRROR / BRUSH



E :707-SPARKLE RED



E :709-SPARKLE BLACK



E :710-SPARKLE WHITE



E :511-SILVER MIRROR



E :512-GOLD MIRROR



E :514-ROSE GOLD MIRROR

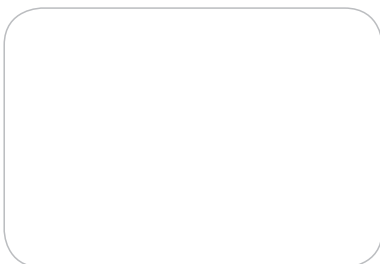


E :513-SILVER BRUSH



E :515-BUTLER STEEL

GLOSS



E :124-GLOSSY WHITE



E :130-GLOSSY ORANGE



E :134-GLOSSY PINK



E-137 GLOSSY RED

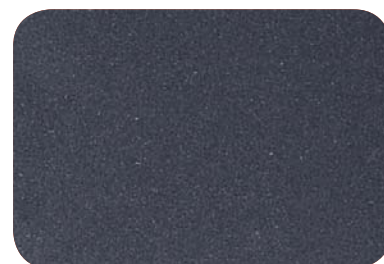


E :143-GLOSSY BLACK

HIGH GLOSS



E :211-HG-PEARL SILVER



E :209-HG-METALLIC PEARL

PASTELS / METALLIC



E :116-RED



E :117-NAVY BLUE



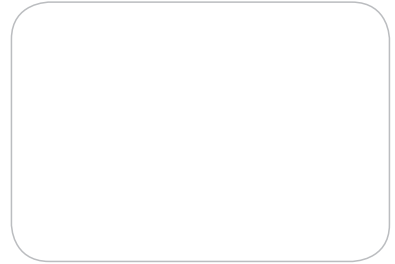
E : 118-POST GREEN



E :119-ORANGE



E :120-TRAFFIC YELLOW



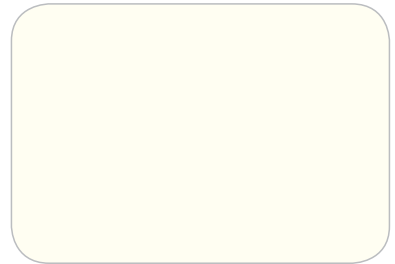
E :121-OFF WHITE



E :122-PURE WHITE



E :123-CHOCOLATE BROWN



E :125-IVORY



E :126-BLACK



E :127-BURGANDY



E :128-LEMON YELLOW



E :129-SLATE GREY



E :131-SIGNAL BLUE



E :132-LAKE BLUE



E :133-EMERLAD GREEN



E :135-REFRESHING GREEN

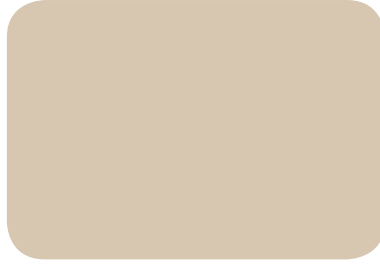


E :136-SAMSUNG BLUE

PASTELS / METALLIC



EI :141-OPPO GREEN



EI :154-DESERT SAND



E :401-BRIGHT SILVER



E :403-RICH GOLD



E :404-METALLIC BLUE



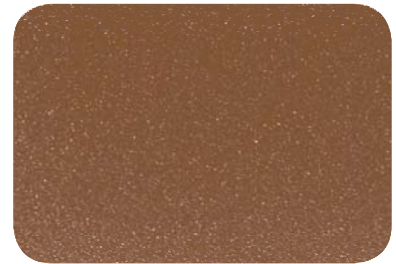
E :405-METALLIC SILVER



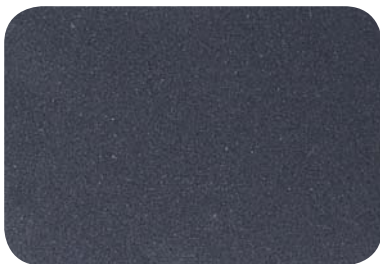
E :406-METALLIC BRONZE



E :407-COPPER METALLIC



E :408-ANTIQUE COPPER



E :409-METALLIC GREY



E :411-WINE RED METALLIC



E :412-LIGHT METALLIC BRONZE



E :413-CHAMPAIGN GOLD



E :415-CLASSIC BURGANDY



COMING SOON



COMING SOON



COMING SOON



COMING SOON

E3 Fire Guard ACP



With the dynamic environment in our upcoming estate, fire retardant material is a basic requirement that one should follow. Fire insurance has been a dominant focal point over the rising number of rational consumers across the globe.

With the onset of global warming and climate change, utilising certified FR grade material is a must for the well-being of the Fire Rated Construction System.

To this, E3 presents THE FIRE GUARD ACP, a one-stop solution for FR grade wall panels.

Technical Specification

Product Grade	Titanium	Turbo	Energy	HPL
Panel Dimensions	2440x1220mm, 3050x1220mm, 3660x1220mm,	2440x1220mm, 3050x1220mm, 3660x1220mm,	2440x1220mm, 3050x1220mm, 3660x1220mm,	2440x1220mm, 3050x1220mm, 3660x1220mm,
ACP Thickness	4.00mm	4.00 / 3.00mm	4.00 / 3.00mm	6.00mm
Aluminium Alloy	Aa3003 / Aa5005	Aa3003	Aa3003	Aa3003
Coating Type	PVDF	PVDF	PVDF	HDPE / PVDF / SDP
Coating Thickness	25-28 μ (Two Coat-Two Bake) / 33-35 μ (Three Coat-Three Bake)			25-28 μ (Two Coat-Two Bake) / 33-35 μ (Three Coat-Three Bake)
Service Coating Thickness	5 - 7 μ			
Coil Supplier	Litong Aluminum Industry Co. Ltd			
Product Tolerance	Panel Length \pm 4.0 mm, Panel Width- \pm 2.0 mm, Panel Thickness \pm 0.2 mm, Coil Thickness \pm 0.03 mm			

*Shade Variance may vary on batch variance

*Please match the batch number before installation. Company liability does not arise if the shades mis match due to batch variation.

Our Clients

Quality Test & Certifications:

Uncompromising Quality, Unparalleled Service



What do our Customers Say?



Using E3 ACP sheets has completely transformed my boring office space. The durability and sleek finish make it an ideal choice for modern interiors. I would highly recommended E3 ACP and applaud them for bringing life into my space.

~Harshit Singhvi
Naman Plywood & Interiors



I love the wood-grain ACP sheets in my home. They add warmth and character to my walls, and the quality is outstanding. Thank you E3 ACP for the nature inspired look for my walls, I have received many compliments for the same.

~Dhruv Maheshwari
G.K II



The marble-textured E3 ACP sheets in my Building facade are a game-changer. Easy to clean, they've made maintenance a breeze without compromising on aesthetics.

~Anshul Gupta
Radhe Traders, Prayagraj

For the purpose of building quality constructions, E3 Fluted ACP clads has expanded its selection to Exterior ACP clads in a variety of colours . Our fluted clads are made to mesmerise individuals who aspire to be encircled by exquisite architecture. This collection, which is a perfect fit for your preferences and sense of style, is the best way to give your house or office a unique touch of style. About one-third the weight of steel, aluminium is a fairly light metal. As a result, the product is lighter, transportation is more effective, and is also completely recyclable.



Super Peeling Strength



Weather Resistant



Fire Retardant



Self-Clean Feature



Easy to Maintain



Even Coating & Varied Colors



Smoothness & Flatness



EFC-15



EFC-409



EFC-34



EFC-122



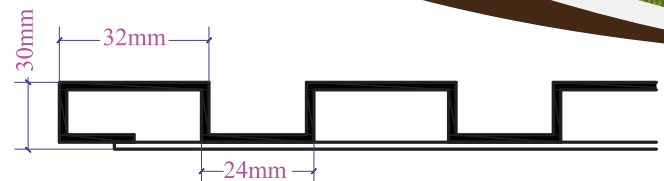
EFC-10



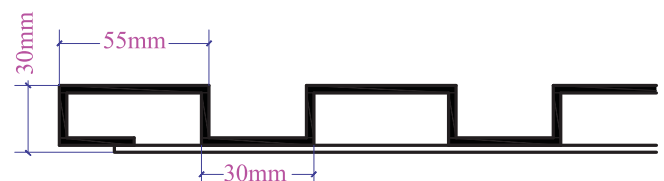
EFC-613

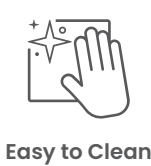


Series: LAVA
616mm(W) x 2440mm(H),
Thickness: 30mm



Series: COMO
765mm(W) x 2440mm(H),
Thickness: 30mm





E3 WPE Exterior Clads explores creative ideas and cutting-edge technology to reimagine tomorrow for a better and richer experience. Incepted this year in 2023, E3 Exterior Clads is quickly becoming an overnight success as an eco-friendly brand of Clads. Bespoke WPE exterior CLADS have lovely textures like wood finishes inspired by nature and kaleidoscopic graphic elements that look good on wall panelling and other places, making your living and working quarters classy. We at E3 believe that your outdoor space should be an extension of your personality. We remain open to new ideas and expertise to build workable designs that stay under budget.

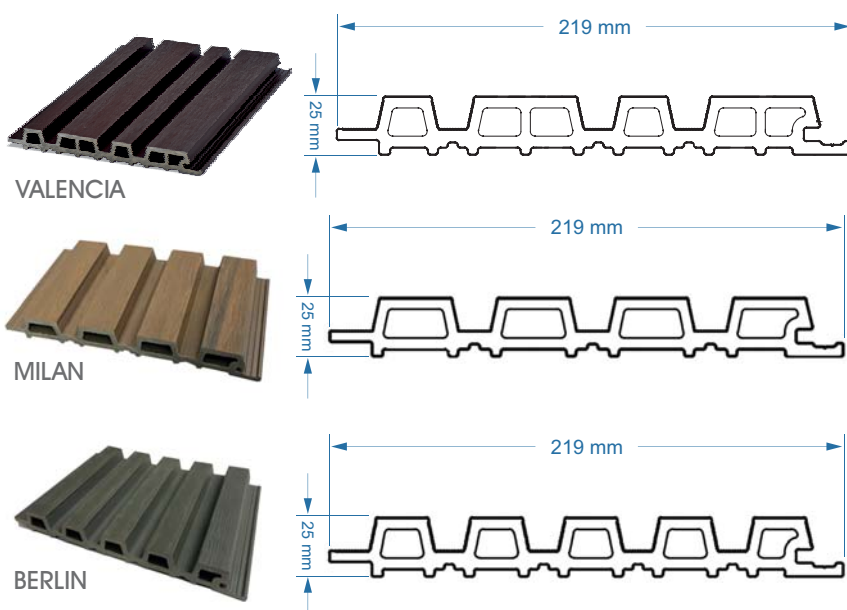
SPECIFICATIONS

COMPOSITION	WPE (TIMBER FIBRE + HDPE AND ADDITIVES)
DIMENSIONS	2900 mm x 219 mm x 25 mm
AREA/PANEL	6.84 sqft/Panel
PANELS/BOX	4 Panels/Box
WEIGHT OF BOX	41 KG
WEIGHT OF PANEL	9.8 KG
FIRE RESISTANCE	YES
TERMITE RESISTANCE	YES
WATER RESISTANCE	YES
INSTALLATION METHOD	TONGUE & GROOVE WITH STAINLESS STEEL CLIPS/CHANNEL

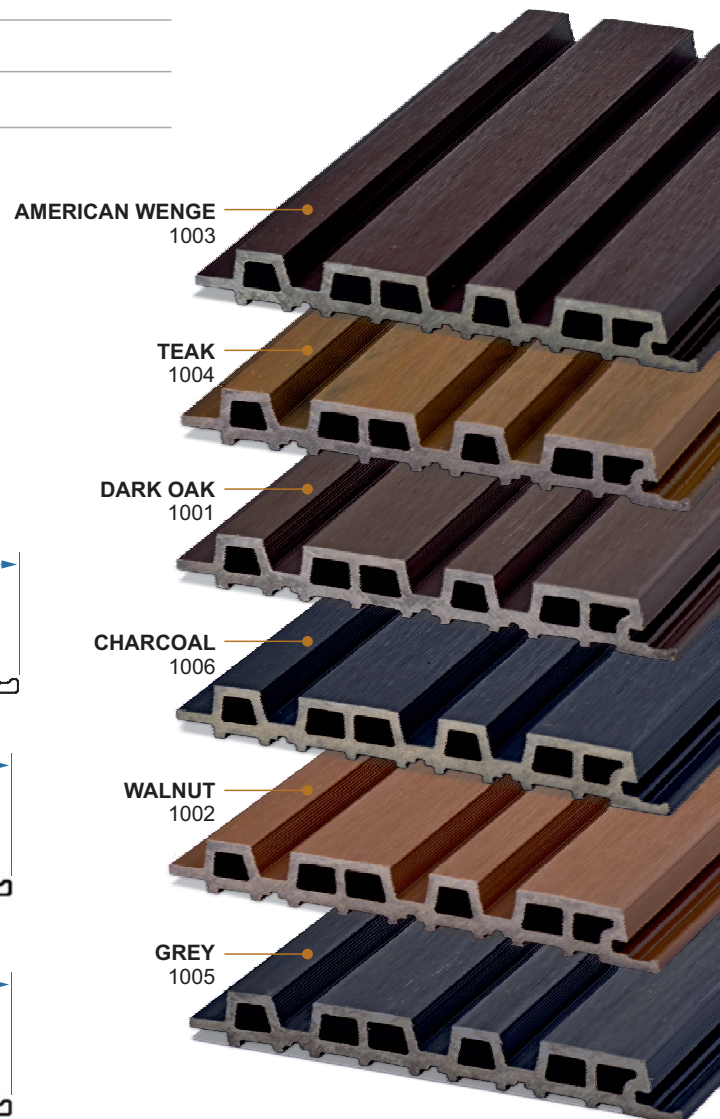


- Color may slightly vary from batch to batch.
- Total weight of the product can have a normal variation of $\pm 5\%$
- We reserve the right to amend the above specification without prior notice with changes in raw material supplies.

MOULDS OPTIONS



COLOR OPTIONS





E3
GROUP

E3 Panel Industries

Corporate Office

D-12/2, Okhla Industrial Area, Phase II, New Delhi - 110020

Works

Plot No-4 Ecotech, Greater Noida - 201308, UP

Branch Office

Ahmedabad, Bangalore, Bhubaneswar, Calcutta, Chandigarh, Chennai, Cochin, Dehradun, Delhi, Guwahati, Hindupuram, Hyderabad, Indore, Jaipur, Kanpur, Lucknow, Mumbai, Noida, Patna, Pune, Raipur, Ranchi, Surat, Udaipur, Visakhapatnam, Zirakpur.

Customer Care : 93109 34090

Email : acp@e3panels.com,

Website : www.e3panels.com, www.e3acp.com

For Design Inspiration Follow Us @

