



CREATE WONDERS

CONTEMPORARY
HPL PANELS



Success - at E3 Group is all about a question with the right combinations: Where delighting consumers sparks imagination, curiosity arouses creativity, and innovation provides opportunities. Together we break new ground and dare to create surprising products, repeatedly causing the observer to marvel at our creations. That is our unifying mission.

E3 Group is the leading manufacturer of interior and exterior products with more than 5000 dealers network in PAN INDIA. Plants are fully equipped with state-of-the-art technology and modern infrastructure. E3 believes in Made in India world-class quality products by “Delivering promise and exceeding expectations”.

E3 GROUP IS THE LEADING MANUFACTURER OF

- CLADS SEAMLESS PANEL
- PVC EDGE BAND TAPES
- ARTIFICIAL GRASS
- DECORATIVE LAMINATES
- PVC LAMINATES
- POLYCARBONATE SHEETS
- LUXURY WALL PANELS
- ACP / HPL
- ACRYLIC LAMINATES
- ACRYLIC PANELS
- UV PANELS
- PRELAM BOARDS
- WPC (BOARD & DOOR FRAMES)
- EXTERIOR CLADS





WELCOME TO E3 HPL

When it's time to give your design a new dimension, E3 Panels offer the flexibility and character you need. E3 High-Pressure Laminate (HPL) is considered one of the most durable decorative surface materials available and boasts enhanced performance. Engineered HPL sheets are manufactured using advanced European technologies and high-quality raw materials. It is produced by sandwiching layers of aluminum foil and LDPE and fusing them under intense heat and pressure. The resulting product is strong, waterproof & available in a diverse range of decors to create a contemporary cost-effective rain screen facade.

A versatile product, E3 HPL is designed with superior Anti-Fade and Anti-scratch Technology. HPL sheet for exterior and interior cladding is highly popular in the industry. Its wide variety has influenced every home designer & architect's choice extensively. You can also add some shine to your next project from our extensive range of designs & finishes to choose from with enduring dedication to quality. E3 has grown significantly and has reached very high-quality standards.

“AS OUR NAME SUGGESTS
E3 IS ELEGANT, EVERLASTING & ECONOMICAL.”

PRODUCT CERTIFICATIONS & APPROVALS:





HPL

www.e3panels.com



E3

elegant | everlasting | economical



MORTGAGE APPLICATION

APPLICANT INFORMATION

SSN: _____ Phone: _____

State: _____ ZIP Code: _____

Monthly payment or rent: _____ How long? _____

State: _____ ZIP Code: _____

Monthly payment or rent: _____ How long? _____

EMPLOYMENT INFORMATION

How long? _____ Fax: _____

State: _____ P Code: _____

Hourly Salary (Please circle) Annual income _____

How long? _____ Fax: _____

State: _____ ZIP Code: _____

Hourly Salary (Please circle) Annual income _____

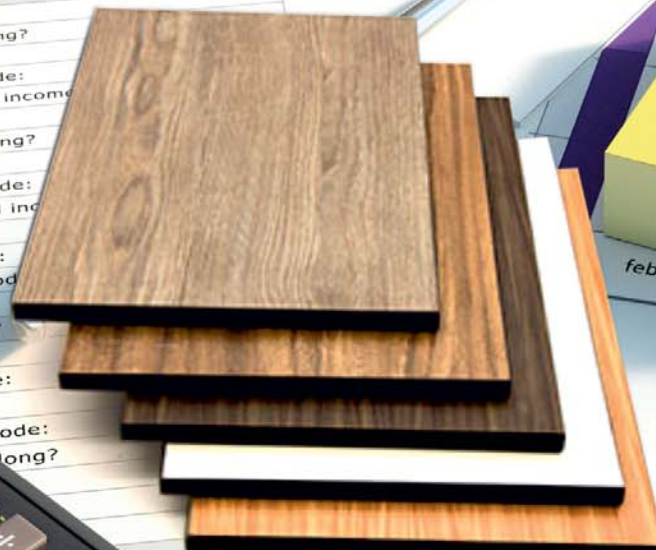
Phone: _____

ZIP Code: _____

Phone: _____

ZIP Code: _____

MEETING
MONDAY
7:00!





FEATURES

Some striking characteristics of metal based HPL



Waterproof



Easy to Install



Durability



Anti-Scratch Technology



Termite Proof



Swelling or Shrinkage Free



Anti-Fade Technology



Wide Range of Colours & Patterns



90° Bendable



Light Weight



Easy to Clean



UV Resistant

THICKNESS - 3mm, 4mm, 6mm

STANDARD SHEET SIZE

| | |
|-----------------|-----------------|
| 2440mm x 1220mm | 3050mm x 1220mm |
| 3660mm x 1220mm | 2440mm x 1525mm |



ENVIRONMENT FRIENDLY



FIRE RETARDANT

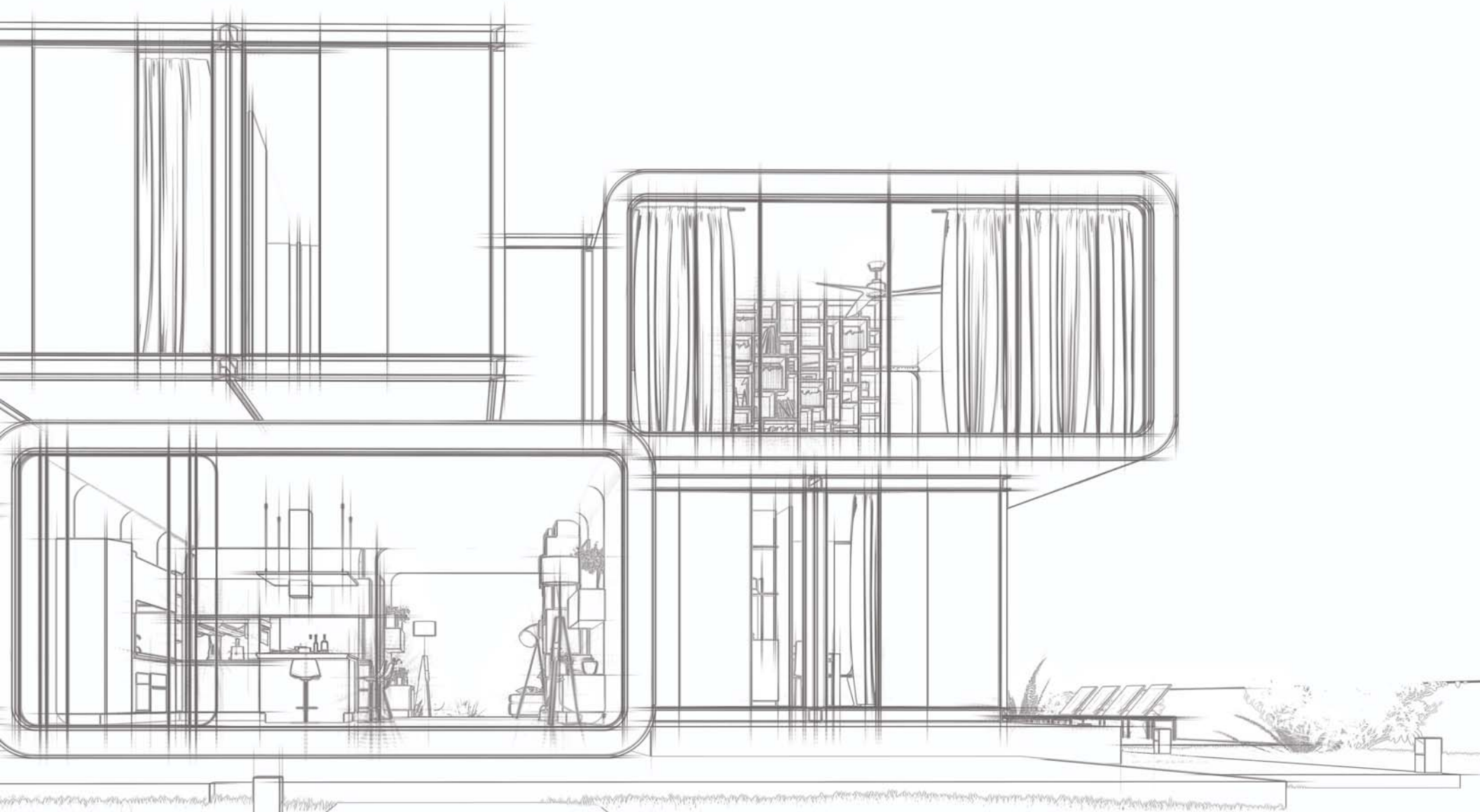
WE PROVIDE 3D DESIGNS TO VISUALIZE YOUR DREAM SPACE IN A BETTER WAY

HPL

www.e3panels.com

CREATING WONDERS
WITH ALL NEW
INNOVATIVE
HPL SHADES





ANTI SCRATCH

HPL

www.e3panels.com



E3

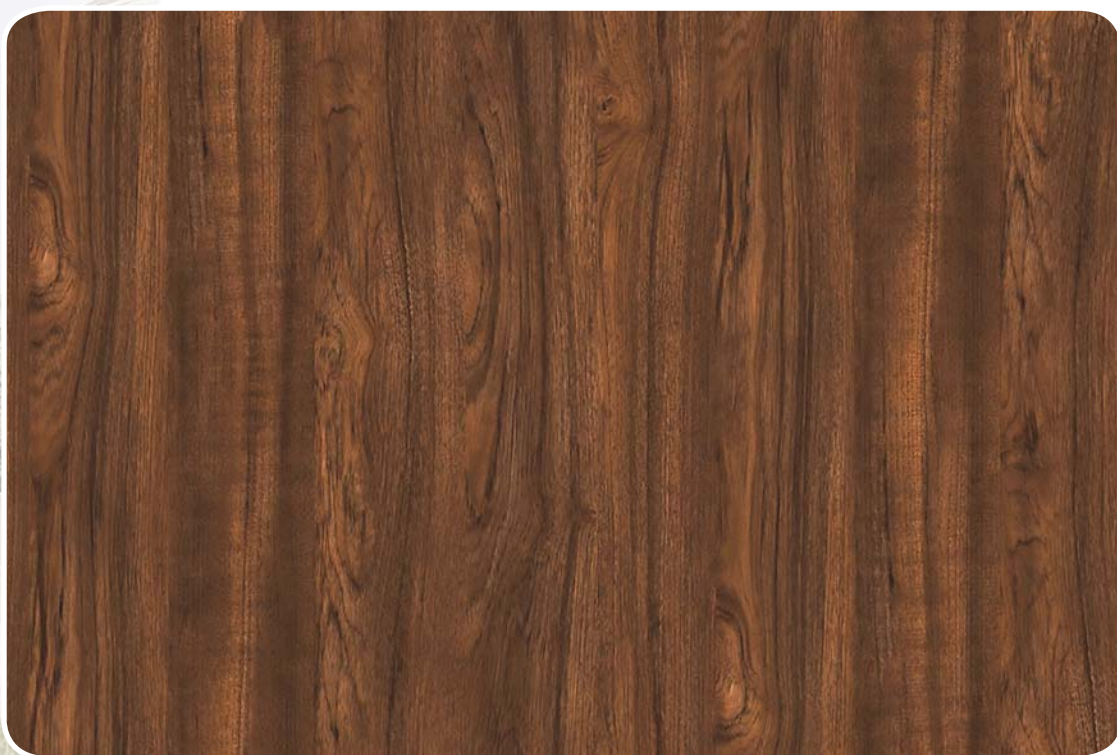
elegant | everlasting | economical

ANTI SCRATCH





E :15-NOVACENTO PINE



E :34-NAGPUR TEAK



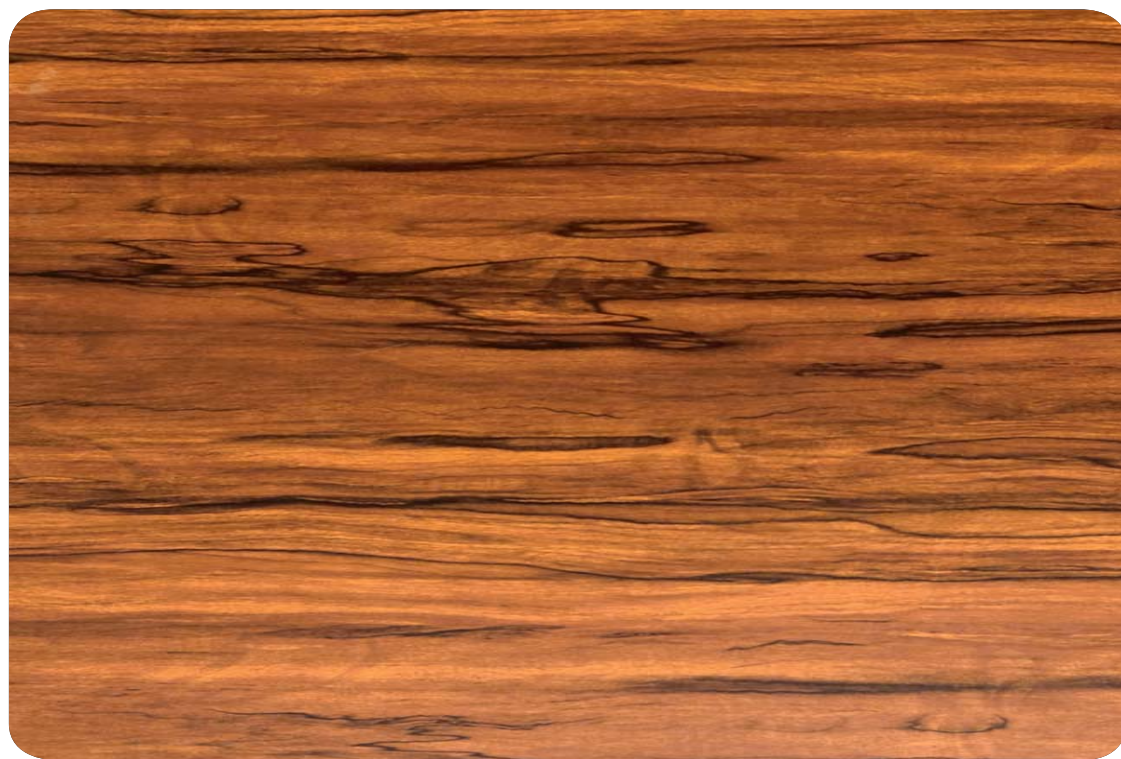
E : 23-BRAZILLIAN TEAK



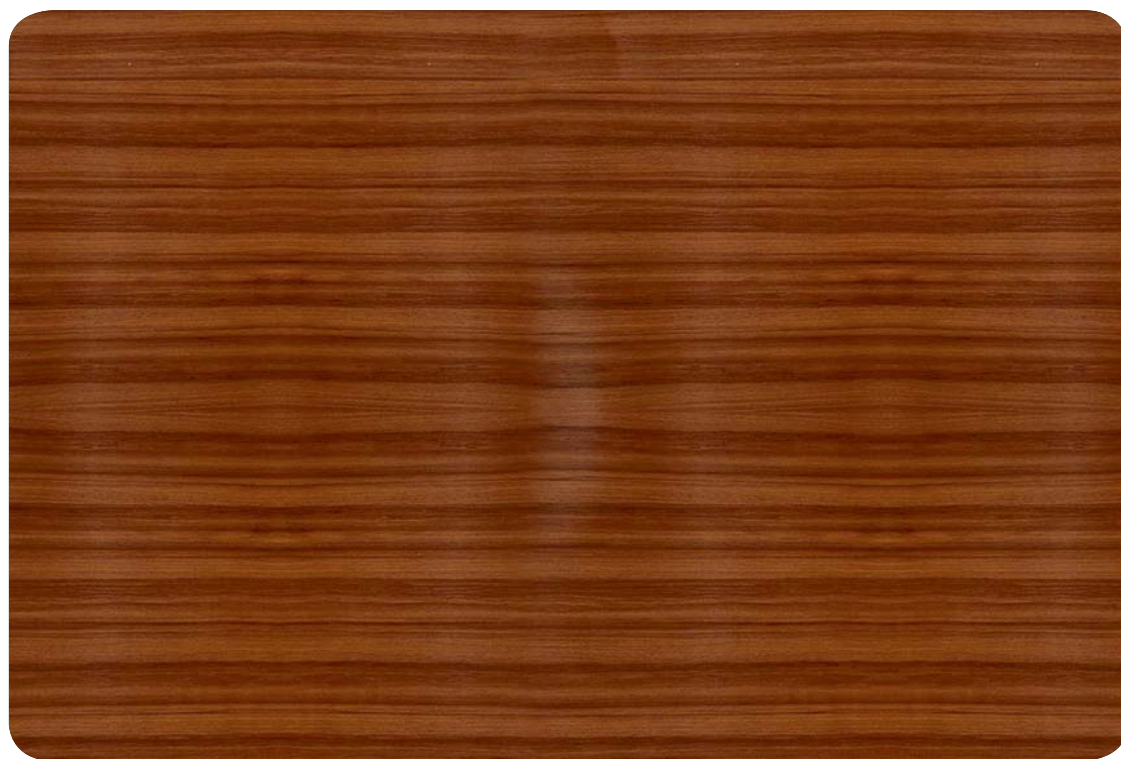
E :17-RUSTIC WALNUT



ANTI SCRATCH



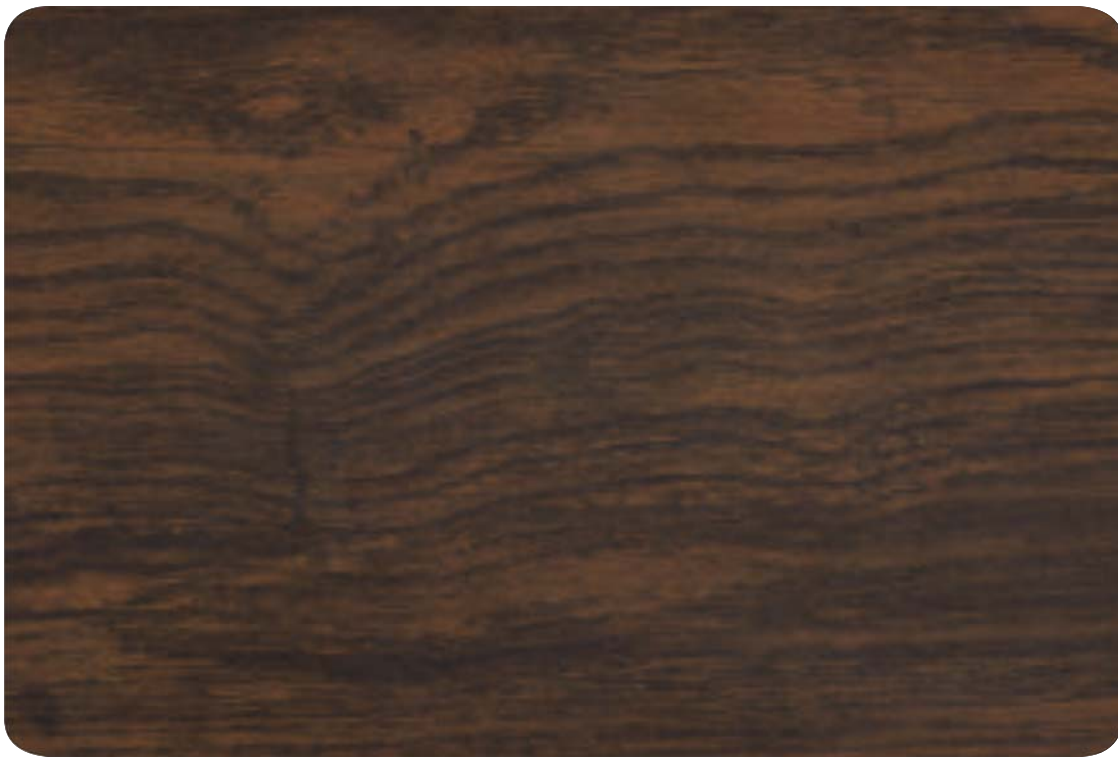
E : 24-BALINESE OAK



E : 20-ROYAL TEAK



E :18-GHANA WALNUT



EI : 31-VALCANIC OAK



ANTI
SCRATCH



E :32-GOLDEN TEAK



E :36-INDONESIA TEAK

APPLICATIONS THAT HELP
ARCHITECTS, DESIGNERS
AND CONNOISSEURS TO
RELISH NATURAL,
WARM MODERN
SENSES AND MORE.





ITALLIAN STONE

HPL



E3

elegant | everlasting | economical

www.e3panels.com

ITALLIAN STONE



E :613 - ALASKA STONE



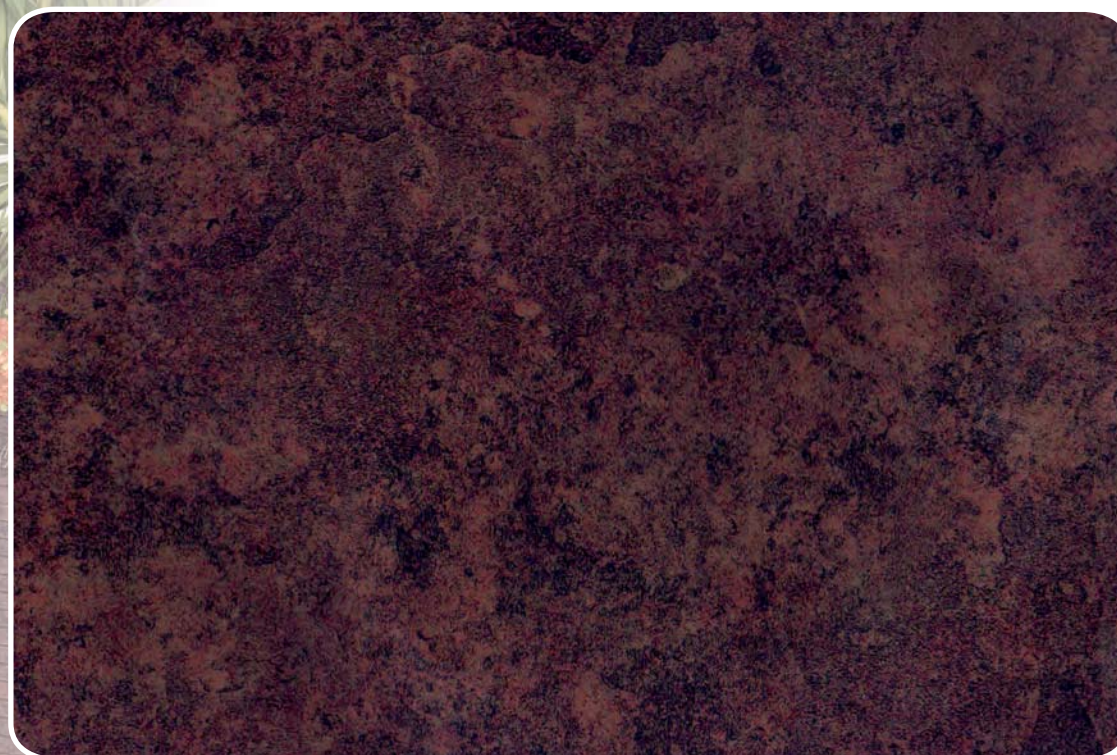
E :612 - GRAPHITE STONE

HPL

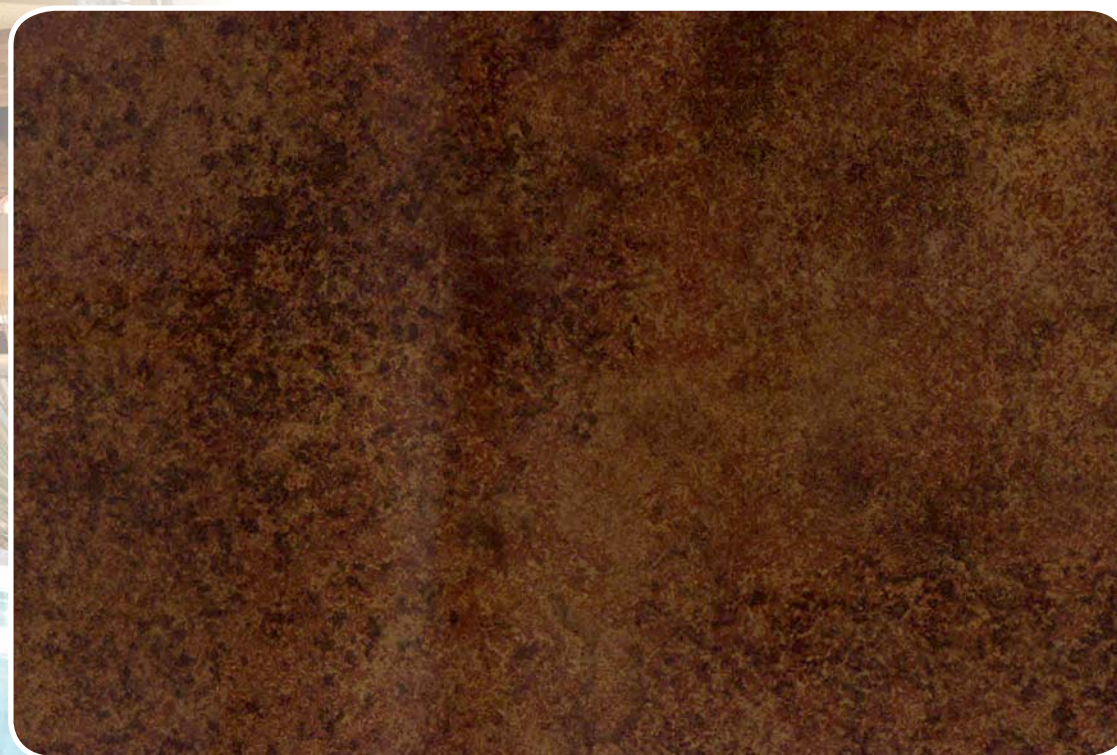


www.e3panels.com

ITALLIAN STONE



E :616 - TURKISH STONE

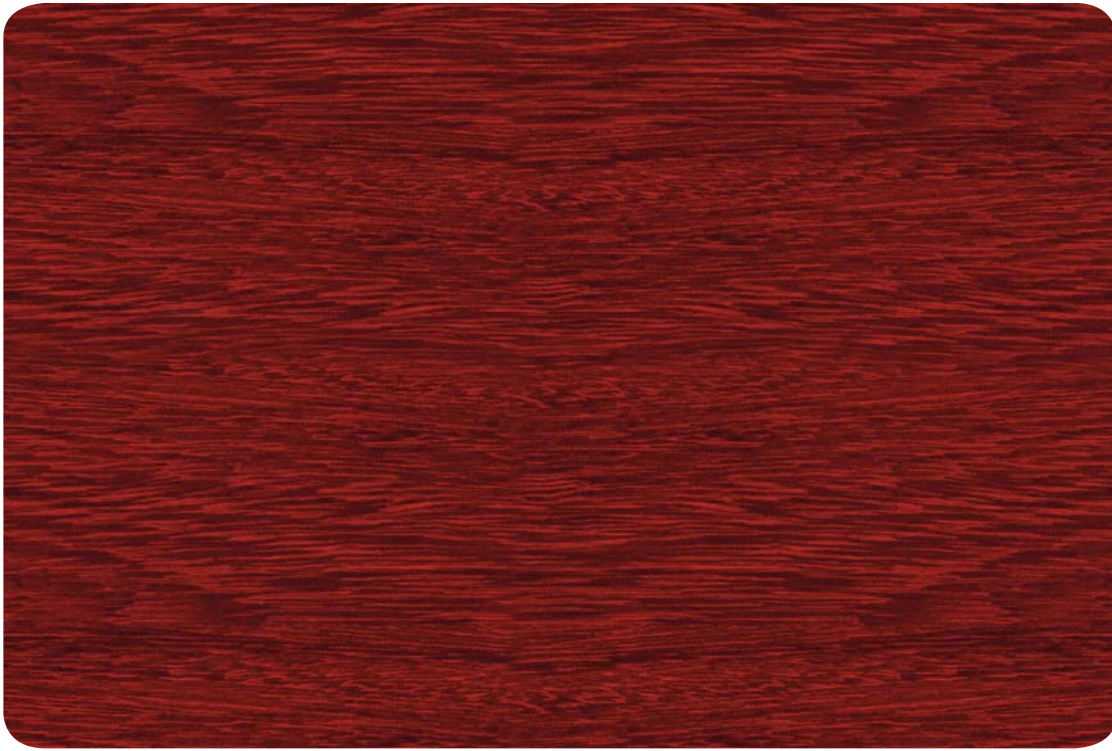


E :615 - COPPER STONE

DEVELOP NATURAL, WARM
AND MODERN SENSES,
PACES WITH NATURAL
WOOD FINISH PANEL
SOLUTIONS.

TIMBER
WOOD





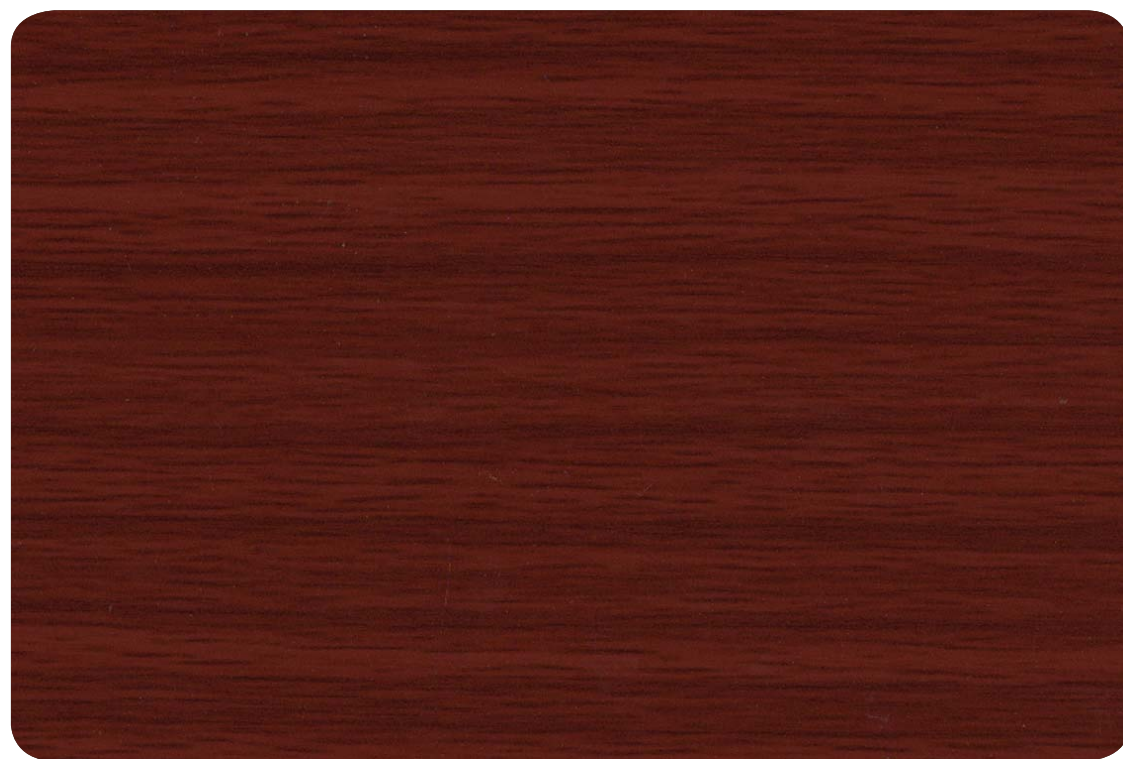
E :14-ROSE WOOD



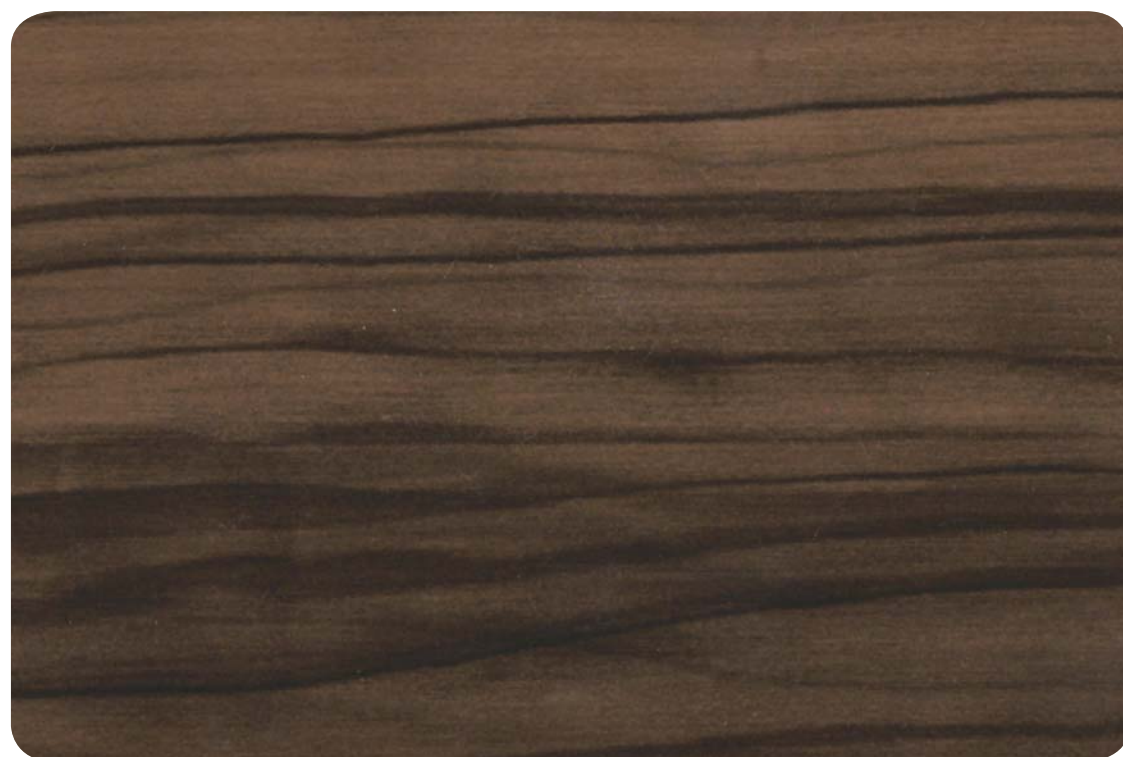
E :35-NEW MAHAGONI

TIMBER
WOOD





E :11-SAPELI



E :13-BLACK EBONY

RENOVATE YOUR
SPACE AND GIVE IT
THAT DESIGNER
LOOK YOU'VE BEEN
AFTER...

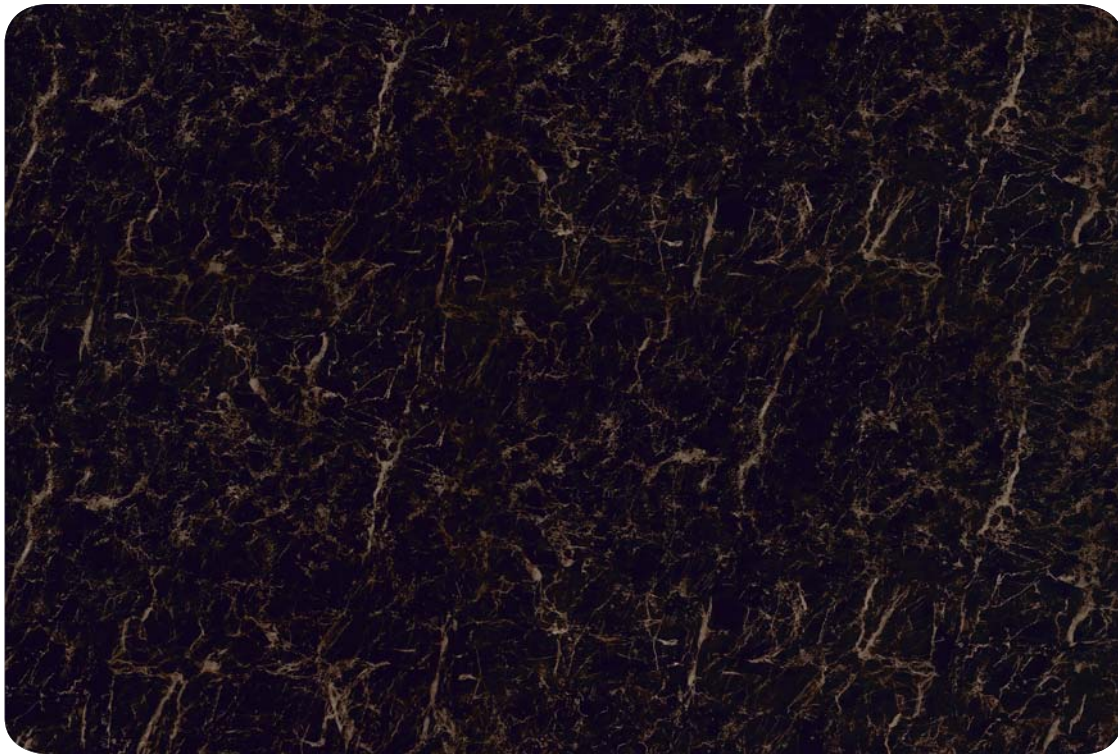




PEBBLES



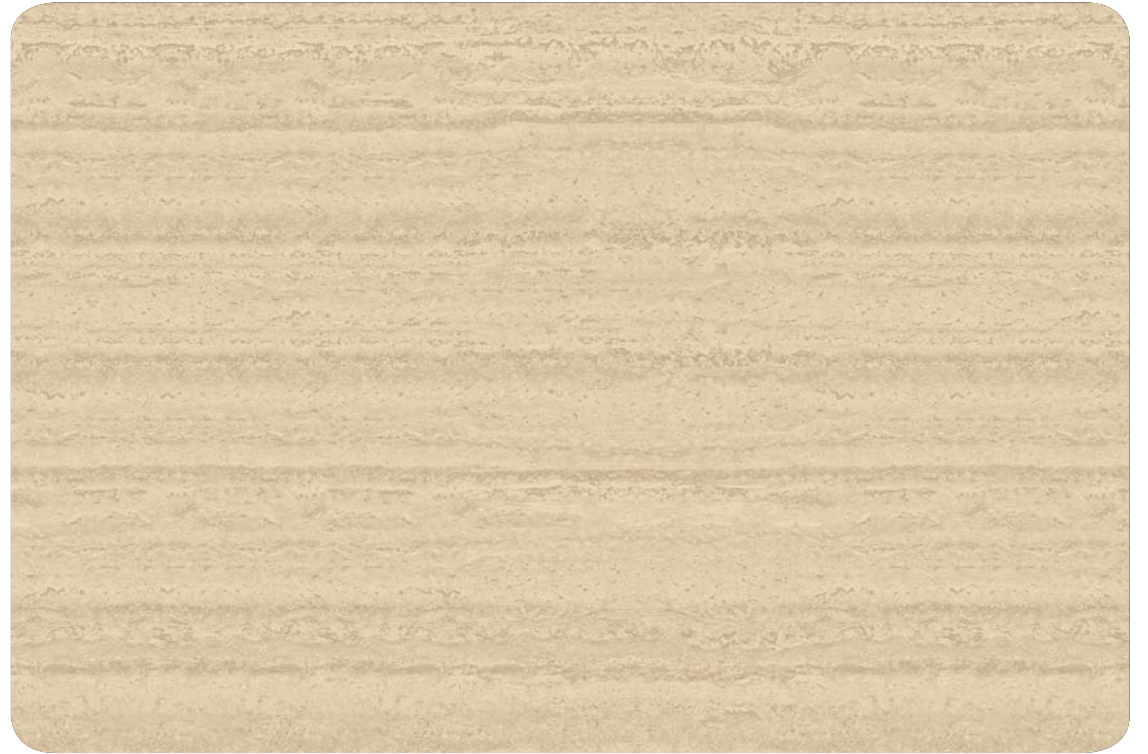
E :610-EUROPEAN STATURIO



E :606-DARK EMPRADOR

PEBBLES





E :605-SOFT PERLATO



EI :619-PEARL BROWN

HPL

www.e3panels.com

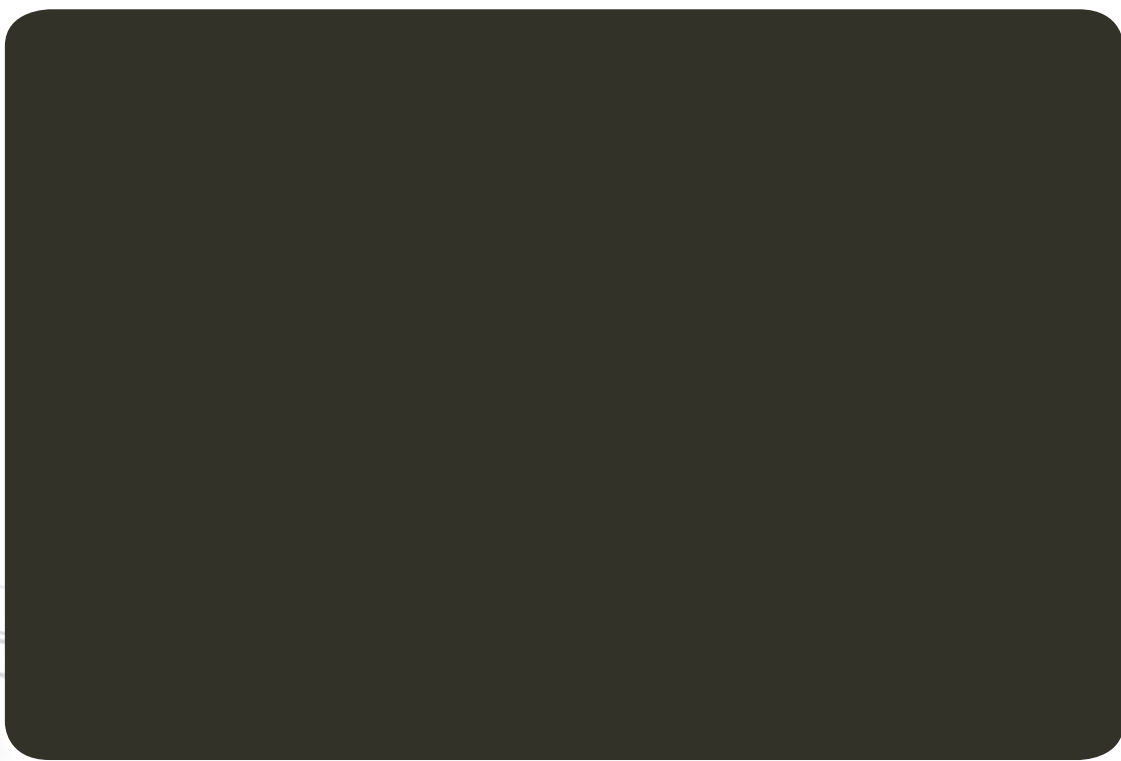


SAND SERIES

HAVE FUN &
EXPERIMENT
WITH MUTED
SHADES OR
BRIGHT HUES
TO KICK-START
YOURDAY!



EIS :902-SHADOW GREY



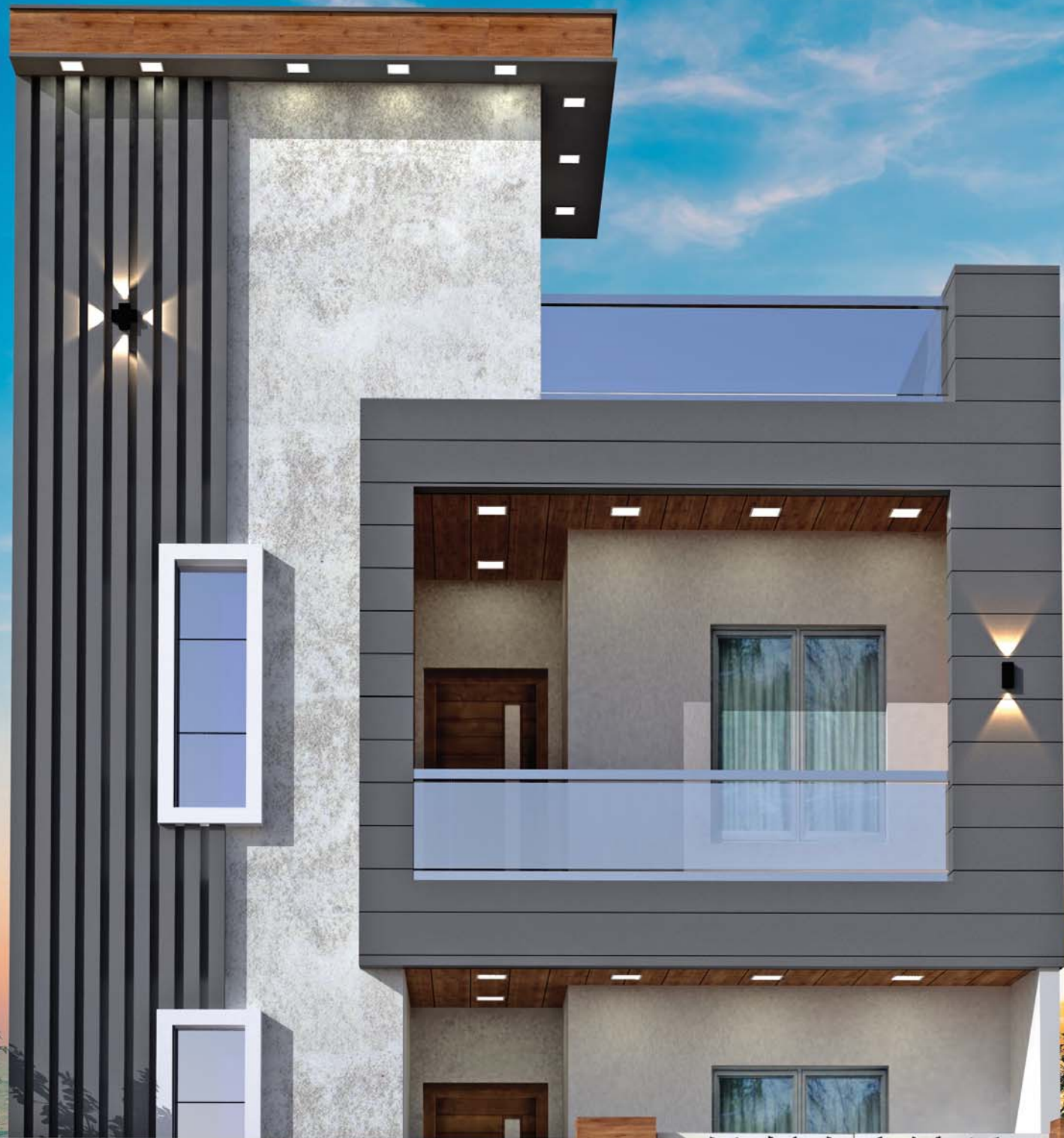
ES :904-ICELAND SAND



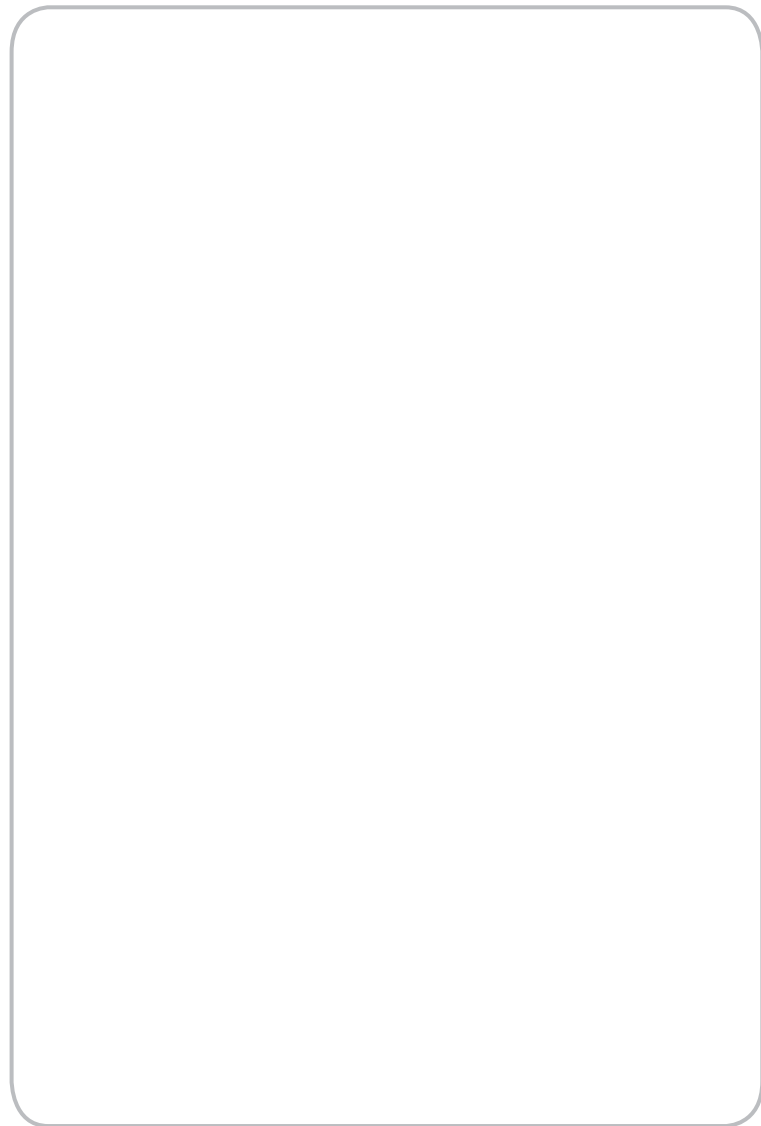
EIS :903-DESERT SAND

HPL

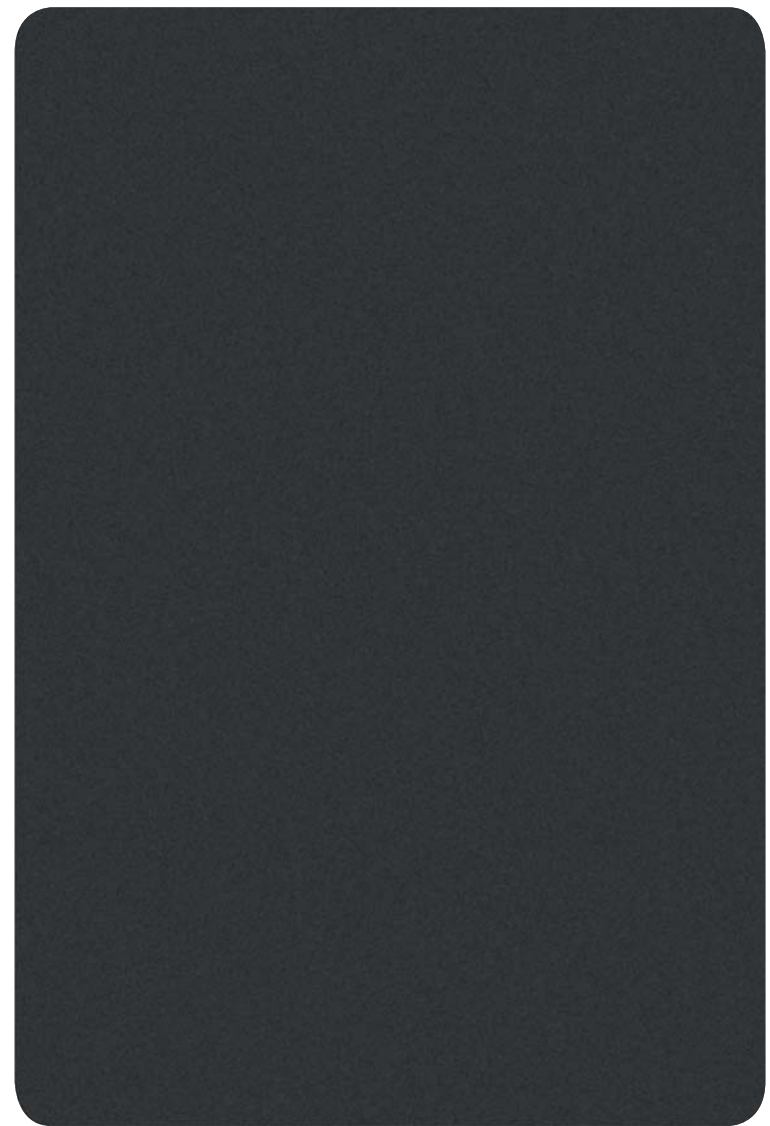
www.e3panels.com



CHOICE OF TODAY'S URBAN VOICE!!



E :122 - PURE WHITE



E :409-METALIC GREY

HPL FIXING METHOD

Black Paint on Plastered Wall

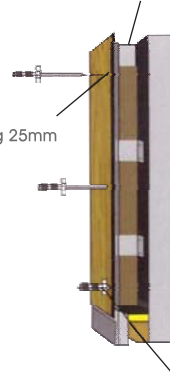


Aluminium Section 25mm x 50mm x 1.6mm



Aluminium angle (cleat) 19mm x 19x2mm

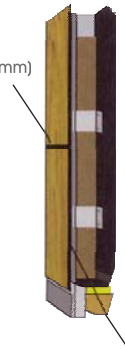
Rawel plug 25mm



With Rivets (powder coated) SS 25" (star headed)

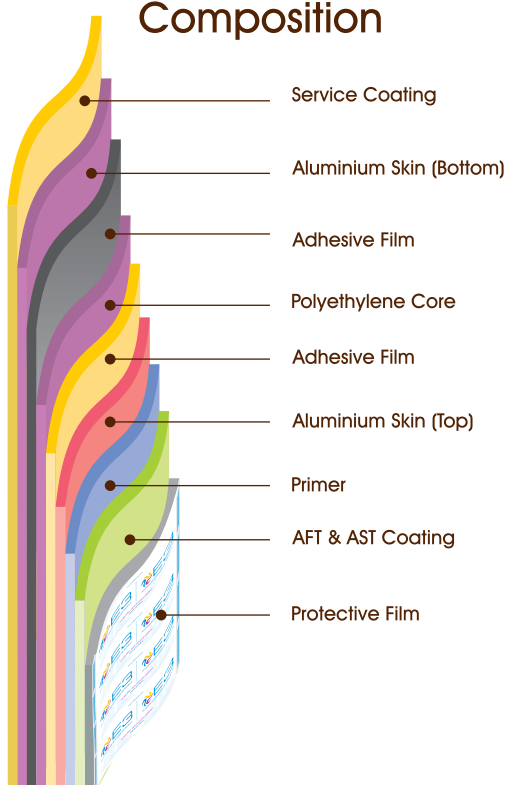
Gap between panel (3-6mm)

Without Rivets



| Thickness of Sheet | Minimum distance of holes to edge | Maximum distance between the holes-width | Maximum distance between the holes-length |
|--------------------|-----------------------------------|--|---|
| 6mm | 10-20mm | 450mm | 550mm |

Composition



Fixing Detail (with Rivets)

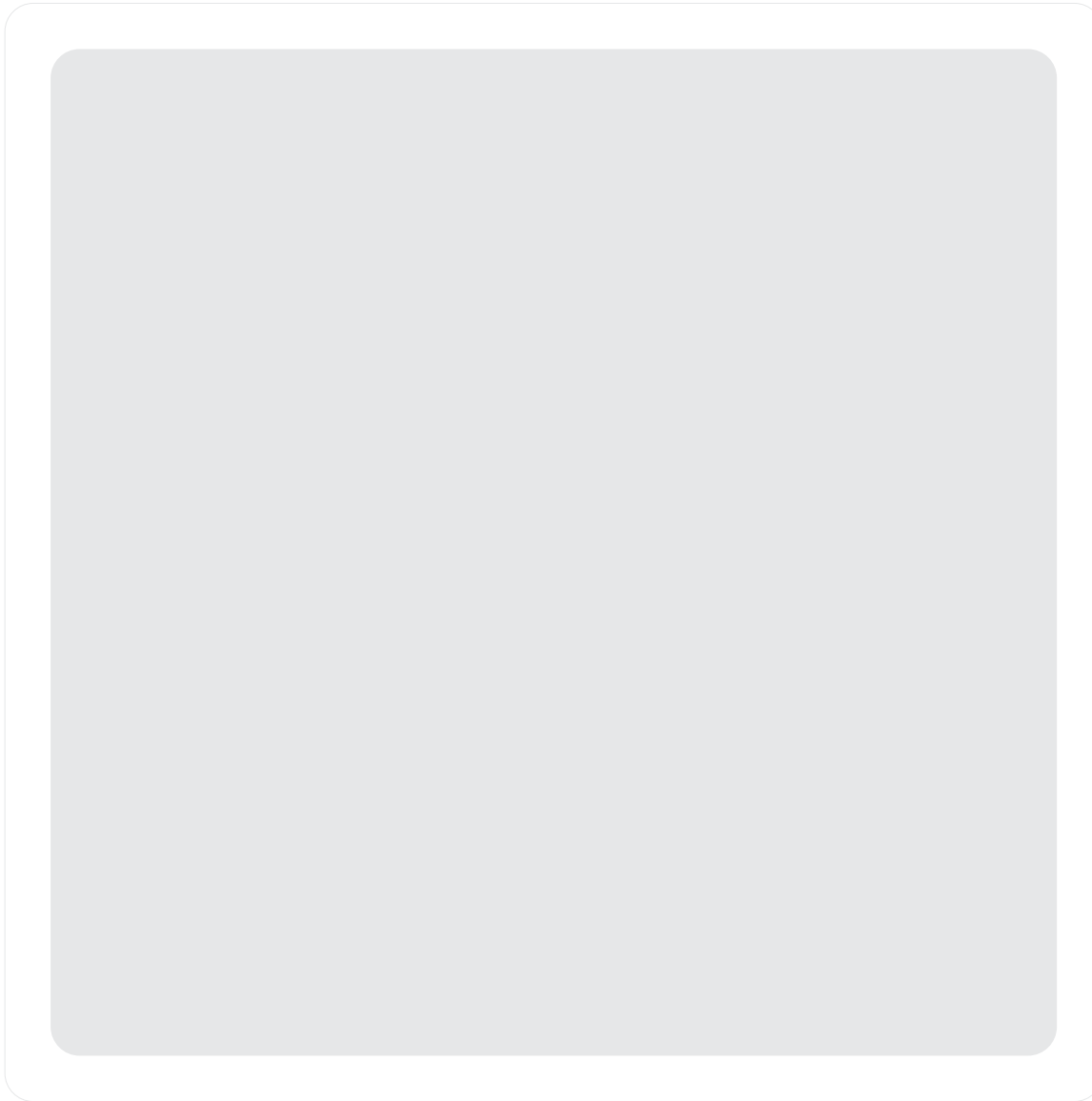
- Black Paint on Plastered Wall.
- Fix Aluminum section on wall, maintain gap of 400 - 700mm center to center with help of cleat vertically.
- Pilot hole must be pre-drilled before fastening rivets tight.
- Size of rivets must be three times the thickness of panel and gauge of aluminum. Ensure rivets use are fully threaded.



Fixing Detail (without Rivets)

- Slightly rub off the surface of Aluminum section & portion of plank with the help of sand paper before apply Adhesive on it.
- Don't use any silicon in gap filling.
- Maintain the minimum gap of 3mm to 6mm in between the Planks.

*Product color may vary from batch to batch. Please refer shade card / sample for actual shade before placing the order.

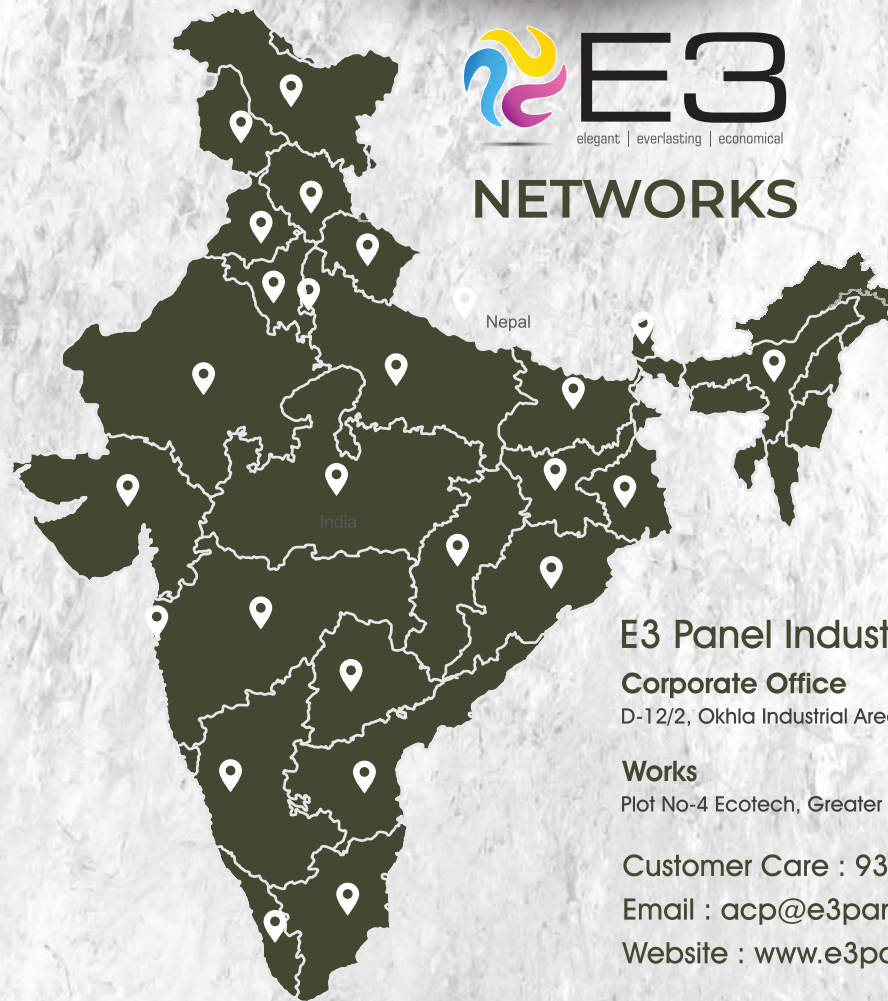


Sample
Size: 6" x 6" inch

*For more details visit: www.e3panels.com



NETWORKS



E3 Panel Industries

Corporate Office

D-12/2, Okhla Industrial Area, Phase II, New Delhi - 110020

Works

Plot No-4 Ecotech, Greater Noida - 201308, UP

Customer Care : 93109 34090

Email : acp@e3panels.com

Website : www.e3panels.com



For Design Inspiration Follow Us @

