



E3

elegant | everlasting | economical

ARTESA

PRE-LAM

HDMR & MDF

WITH MATCHING
EDGE BANDS & LAMINATES



Ye Righta
Lamba
Chalega



IS : 12406



CM/L 8300176809

IS : 14587



CM/L 8300176716



ABOUT THE GROUP

Success at E3 Group is all about the right combinations: Where delighting consumers sparks imagination, curiosity arouses creativity, and innovation provides opportunities. Together we break new ground and dare to create surprising products, repeatedly causing the observer to marvel at our creations. That is our unifying mission.

E3 Group is the leading manufacturer of interior and exterior products with more than 6000 dealer's network in PAN INDIA. **E3 Facilities** are fully equipped with state-of-the-art technology and modern infrastructure. E3 believes in "Made in India" world-class quality products by "Delivering promise and exceeding expectations".

E3 GROUP is the Leading Surface Product Manufacturer of

INTERIOR RANGE

- HDMR | MDF
- Edge Band
- Clads Seamless Panel
- PVC Laminates
- Decorative Laminates
- Acrylic Laminates & Panels
- Modular Kitchen & Wardrobes
- Hardware (Drawer Channel & Hinges)
- Plywood
- PU Stone
- Soffit Panels

EXTERIOR RANGE

- ACP
- HPL
- Exterior WPE Clads
- Artificial Grass
- Sports Turf
- Polycarbonate Sheets
- Exterior WPE Decking



DOWNLOAD
GROUP PROFILE





E3 PRE-LAM PRODUCT RANGE

OSL	One-side laminated	OSB	One-side Balancing
BSL	Both-side laminated	BSB	Both-side Balancing
OSD	One-side Decorative		

ALL E3 PRE-LAM RANGE IS AVAILABLE WITH



PRODUCT SPECIFICATIONS

Finishes: Suede and Matt | Thickness: 2 mm - 25 mm | Size: 2440mm×1220mm

PRODUCT FEATURES

DURABLE | CARPENTER FRIENDLY | FULL THICKNESS

SUITABLE FOR INTERIOR USE | EASY TO CLEAN | **100%** PHENOLIC BONDING



100% MATCHING
EDGE BANDS & LAMINATES

IS : 12406



CM/L 8300176809



DOWNLOAD
ARTESA PRE-LAM
SHADE CARD

IS : 14587



CM/L 8300176716

NEW ARRIVALS

NEW



Matching Edge Band: 2232

E 189

BRISTLING WALNUT LIGHT

NEW



Matching Edge Band: 2233

P 190

ARIZONA OAK LIGHT

NEW



Matching Edge Band: 2234

E 191

BRISTLING WALNUT DARK

NEW



Matching Edge Band: 2235

P 192

ARIZONA OAK DARK



NEW



Matching Edge Band: 2316

P 193

PARIA OAK

NEW



Matching Edge Band: 2218

P 194

GRENEA PINE

NEW



Matching Edge Band: 2236

P 195

MERANA WOOD

NEW



Matching Edge Band: 2237

E 196

BRUSSEL WOOD

NEW



Matching Edge Band: 2238

E 197

AESTHETIC DUNE

NEW



Matching Edge Band: 2239

E 198

PERSIAN OAK

NEW



Matching Edge Band: 2240

E 199

DUSKY WOOD

NEW



Matching Edge Band: 2241

E 200

ALBERTA BEACH



Matching Edge Band: 2201

E 201 EUROPEAN TEAK



Matching Edge Band: 2202

E 202 FRENCH OAK



Matching Edge Band: 2203

E 203 GERMAN OAK



Matching Edge Band: 2204

E 204 ALASKA DARK



Matching Edge Band: 2205

E 205 ALASKA LIGHT



Matching Edge Band: 2080

E 206 CLASSIC PLANKED



Matching Edge Band: 2207

E 207 NIAGRA OAK



Matching Edge Band: 2062

E 208 ACACIA (LIGHT)



Matching Edge Band: 2208

E 209 AMERICAN OAK



E 210 ACACIA (DARK)

Matching Edge Band: 2061



E 211 PACIFIC WOOD

Matching Edge Band: 2209



E 212 HIGH LINE PINE

Matching Edge Band: 2210



P 213 ROYAL TEAK

Matching Edge Band: 2211



E 214 GREY WALNUT

Matching Edge Band: 2212



E 215 MANGFALL BEACH

Matching Edge Band: 2009



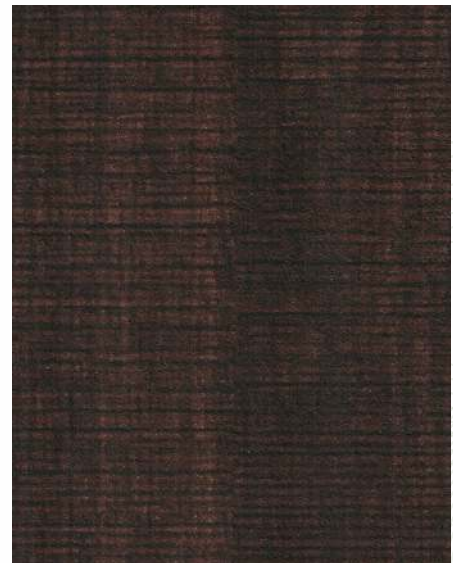
E 216 BAVERIAN BEACH

Matching Edge Band: 2226



E 217 SAND CROSS LINE

Matching Edge Band: 2213



E 218 CHOCO CROSS LINE

Matching Edge Band: 2214



Matching Edge Band: 2227

E 219 MAPLE WHITE



Matching Edge Band: 2095

E 220 EVERGREEN TEAK



Matching Edge Band: 2215

E 221 OXFORD CHEERY



Matching Edge Band: 2058

E 222 MAHAGONY



Matching Edge Band: 2058

E 223 SAPELLE NEW



Matching Edge Band: 2217

E 224 ROSE WOOD



Matching Edge Band: 2041

E 225 N.T BROWN



Matching Edge Band: 2063

E 226 FL WENGE



Matching Edge Band: 2003

E 227 DARK WENGE



Matching Edge Band: 2049

E 228

CASTLE OAK



Matching Edge Band: 2004

E 229

SWARNA GOLD



Matching Edge Band: 2218

E 230

NOVACENTO PINE



MARBLE COLLECTION



P 231

PEARL

Matching Edge Band: 2219



E 232

ALASKA STONE

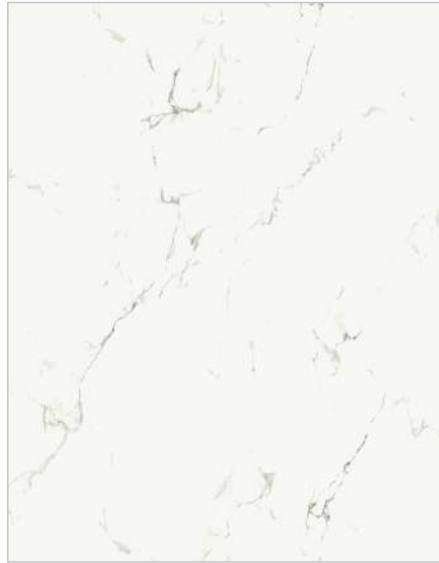
Matching Edge Band: 2220



E 234

DARK EMPRADOR

Matching Edge Band: 1006



P 233

STATUARIO

Matching Edge Band: 2522



E 235

MARBLE CHIPS

Matching Edge Band: 2221

NEW ARRIVALS

NEW



Matching Edge Band: 2312

E 313

WARM FABRIC

NEW



Matching Edge Band: 2302

E 314

GREY FABRIC

NEW



Matching Edge Band: 2312

E 315

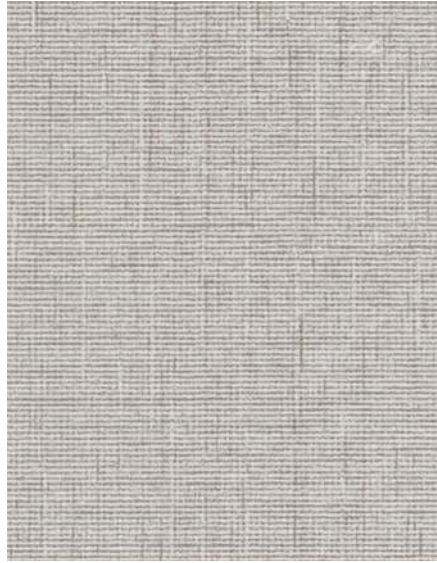
BRILLIANT WEAVE



E 301

FAB CREAM

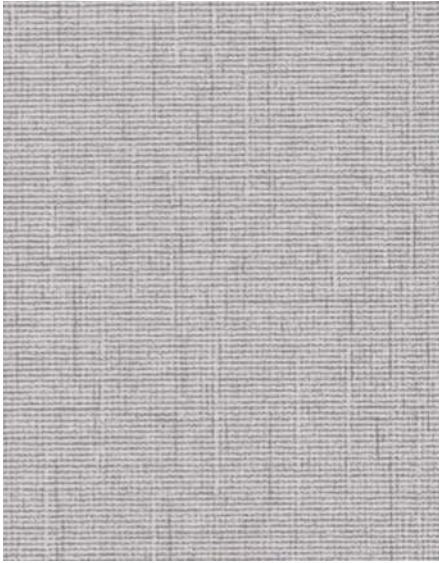
Matching Edge Band: 2222



E 302

ROYAL KHADI

Matching Edge Band: 2223



E 303

KHADI GREY

Matching Edge Band: 2302



E 304

HAZEL FABRIC

Matching Edge Band: 2224



E 305

COLUDY CAMBRIC

Matching Edge Band: 2225

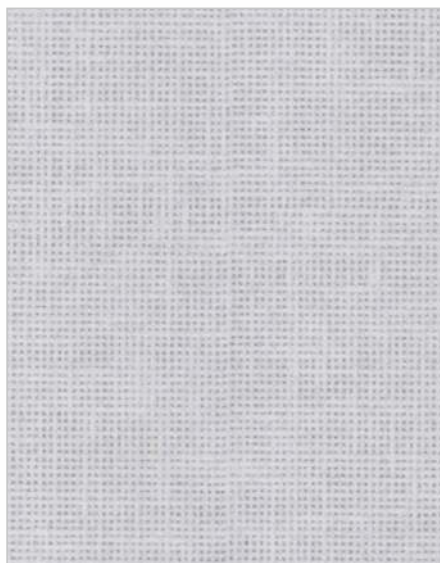


E 306

CREAM CAMBRIC

Matching Edge Band: 2098

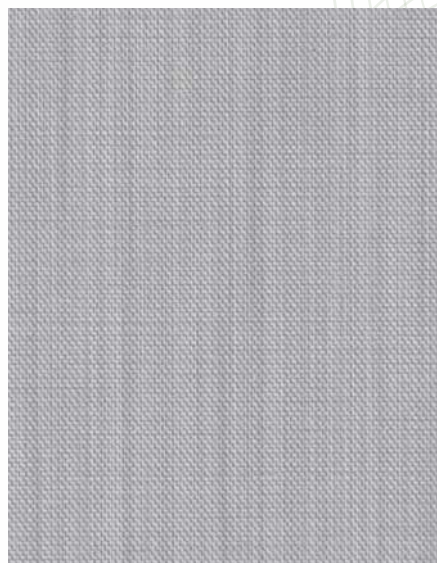




E 307

MESH FABRIC

Matching Edge Band: 2100



E 308

LINEN GREY

Matching Edge Band: 2339



E 309

ROYAL FABRIC

Matching Edge Band: 2089



E 310

LINEN BROWN

Matching Edge Band: 2340



E 311

DUNE FABRIC

Matching Edge Band: 2310



E 312

TWILL DENIM

Matching Edge Band: 2310

SOLID COLLECTION

100% EDGE BANDS
MATCHING & LAMINATES



E 100 FROSTY WHITE / BSB

Matching EB:



E 101 SNOW WHITE

Matching EB: 1001



E 102 AQUA WHITE / BSB

Matching EB: 1101



E 103 SUPER WHITE / BSB

Matching EB: 1001



E 104 OFF WHITE

Matching EB: 1002



E 105 WARM WHITE

Matching EB: 1103



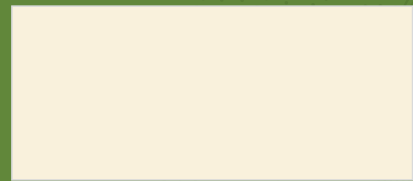
P 106 ROYAL WHITE

Matching EB: 1002



P 107 WOOL

Matching EB: 1002



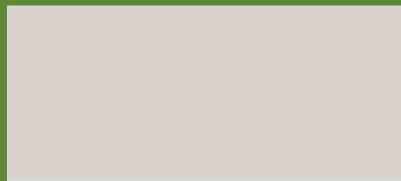
P 108 IVORY

Matching EB: 1033



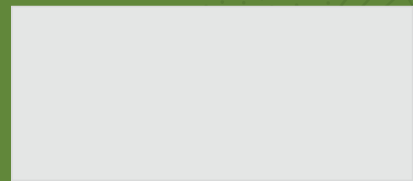
P 109 COFFEE

Matching EB: 1046



P 110 CAPPUCCINO

Matching EB: 1013



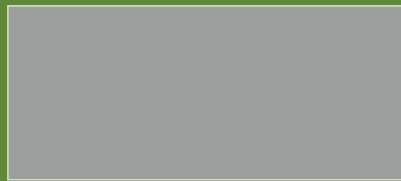
P 111 SILVER GREY

Matching EB: 1004



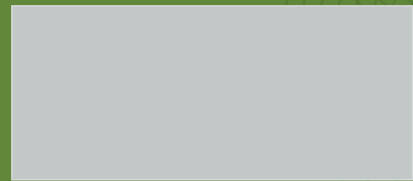
P 112 GOTHIC GREY

Matching EB: 1019



E 113 LIGHT GREY

Matching EB: 1051



E 129 SALT GREY

Matching EB:





P 114

SLATE GREY

Matching EB: 1005



E 115

DARK GREY

Matching EB: 1005



P 116

FOSSIL

Matching EB: 1107



P 117

ORANGE

Matching EB: 1015



P 118

PARROT GREEN

Matching EB: 1118



P 119

PINK

Matching EB: 1106



P 120

ELECTRIC BLUE

Matching EB: 1011



P 121

SUNFLOWER

Matching EB: 1007



E 122

KINGFISHER BLUE

Matching EB: 1011



E 123

CARNIVAL RED

Matching EB: 1009



E 124

CLASSIC BLACK

Matching EB: 1006



E 125

NAGPUR ORANGE

Matching EB:



E 126

EVERGREEN PINK

Matching EB:



E 127

YELLOW

Matching EB:



E 128

GREEN

Matching EB: 1018



TECHNICAL SPECIFICATIONS

S.No.	Test	Unit	HDMR	Exterior	Interior	Boil Guard
1	Density	kg/m3	850-900	700-800	700-800	>1000
2	Variation from mean density	%	±10	±10	±10	±10
3	Moisture Content	%	4.0-8.0	4.0-8.0	4.0-8.0	4.0-8.0
4	Variation from mean moisture content	%	±3	±3	±3	±3
5	Thickness Swelling in 24 hrs (Max)	%	Up to 20	Up to 35	Up to 35	≤2
6	Modulus of rupture (Min)	N/mm2				
	a) Up to 20mm Thickness (Average)		30-35	22-27	18-23	>50
	b) Above 20mm Thickness (Average)		25-30	15-22	15-18	>48
7	Modulus of elasticity (Min)	N/mm2				
	a) Up to 20mm Thickness (Average)		2600-3200	2300-2800	2100-2800	>5500
	b) Above 20mm Thickness (Average)		2100-2600	1900-2300	1700-2100	>5000
8	Internal bond strength (Min)	N/mm2				
	a) Up to 20mm Thickness (Average)		0.90-1.20	0.60-0.70	0.55-0.65	>2.0
	b) Above 20mm Thickness (Average)		0.80-1.10	0.50-0.60	0.50-0.55	>2.0
9	Internal bond strength (Min)	N/mm2				
	a) After cyclic Test		0.12-0.35	0.10-0.35	NA	>1.0
	b) After AWR		0.12-0.20	0.10-0.20	NA	>1.0
10	Screw withdrawal strength (Min)	N				
	a) Face		3000	1250	1250	≥4000
	b) Edge		2300	850	700	≥2600
11	Surface abrasion (Min)					
	a) Type - 1		1000	1000	1000	1000
	b) Type - 2		450	450	450	450
	c) Type - 3		250	250	250	250
	d) Type - 4		75	75	75	75
12	Resistance to steam / water vapours		No blister, delamination or change in surface finish			
13	Resistance to Crack		No sign of crack or delamination			
14	Resistance to cigarette burn		No mark or stain on the specimen after cleaning with water or solvent			
15	Resistance to stain		No stain on the specimen after cleaning with water or detergent			
16	Formaldehyde content (Fc)	mg/100 g for oven dry board	Formaldehyde Class, E1 : Fc≤8			
			Formaldehyde Class, E2 : 8<Fc≤30			



Office : D-12 | 2, Okhla Industrial Area, New Delhi – 110020

Plant : Khasra No 1133, Mahukhera Ganj, Kashipur, Uttarakhand 244713



www.e3mdf.com

www.e3groupindia.com



info@e3mdf.com



DOWNLOAD
GROUP PROFILE



DOWNLOAD
ARTESA PRE-LAM
SHADE CARD