



E3

ACP | HPL | MDF | CLADS

Ye
Rishta Lamba
Chalega



Volume - VI



Success - at E3 Group is all about a question with the right combinations: Where delighting consumers sparks imagination, curiosity arouses creativity, and innovation provides opportunities. Together we break new ground and dare to create surprising products, repeatedly causing the observer to marvel at our creations. That is our unifying mission.

E3 Group is the leading manufacturer of interior and exterior products with more than 6000 dealers network in PAN INDIA. E3 Facilities are fully equipped with state-of-the-art technology and modern infrastructure. E3 believes in Made in India world-class quality products by "Delivering promise and exceeding expectations".

E3 GROUP is the Leading Manufacturer of

Interior Range

- **HDMR | MDF**
- **Edge Band**
- **Clads Seamless Panel**
- **PVC Laminates**
- **Decorative Laminates**
- **Acrylic Laminates & Panels**
- **Modular Kitchen & Wardrobes**
- **Hardware** (Drawer Channel & Hinges)
- **Plywood**
- **PU Stone**
- **Soffit Panels**

Exterior Range

- **ACP**
- **HPL**
- **Exterior WPE Clads**
- **Artificial Grass**
- **Sports Turf**
- **Polycarbonate Sheets**
- **Exterior WPE Decking**

Ye Rishta Lamba Chalega



#Saif Ali Khan
Brand Ambassador

Welcome To E3 ACP

When it's time to give your design a new dimension, E3 Panels offer the flexibility and character you need. Aluminium Composite Panel (ACP) is considered to be one of the most durable, decorative surface materials available and boasts enhanced performance properties. It is produced by sandwiching layers of aluminum foil and LDPE and fusing them together under intense heat and pressure. The resulting product is strong, waterproof & available in a diverse range of decors to create a contemporary cost effective rainscreen facade.

A versatile product, E3 Aluminium Composite Panels (ACP) is designed with superior Anti-Fade and Anti-Scratch Technology. You can also, add some shine to your next project, from our extensive range design & finishes to choose from with enduring dedication to quality.

"As our name suggests E3 is Elegant, Everlasting & Economical."

THICKNESS	STANDARD SHEET SIZE	
3mm, 4mm, 6mm	2440mm x 1220mm	3050mm x 1220mm
	3660mm x 1220mm	2440mm x 1525mm

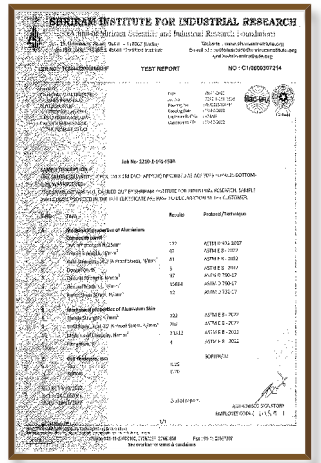
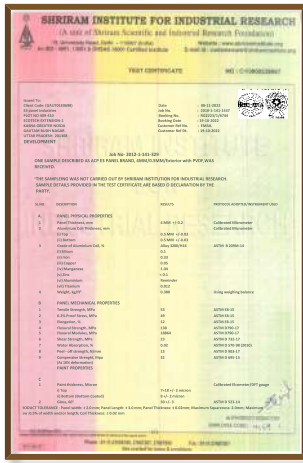
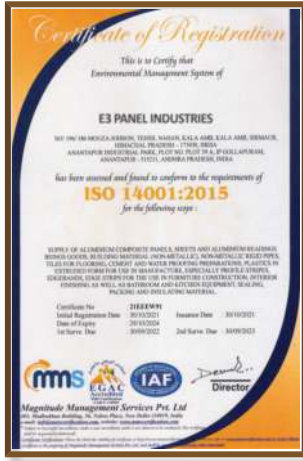


Product certifications & approvals



QUALITY TEST & CERTIFICATIONS

Uncompromising Quality, Unparalleled Service

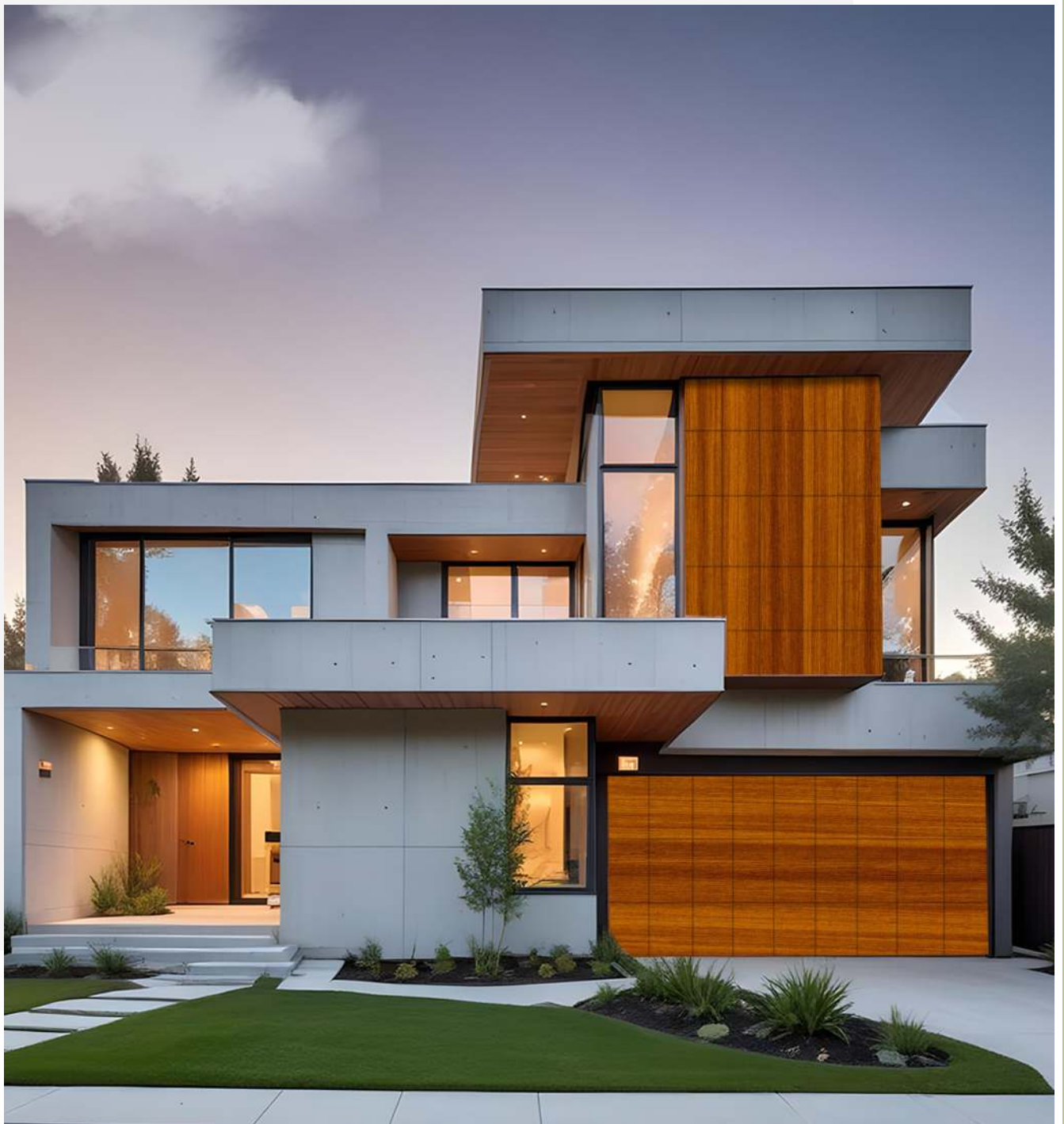


HPL

HPL is the ultimate alternative to wood and marble, especially for building exteriors. Its exceptional durability and resistance to chemicals, fire, and water make it a reliable choice for all weather conditions.

E3's **Metal-Based HPL** takes innovation to the next level. Its substantial 6mm thickness makes it perfect for exteriors and entry gates. Its **90-degree** bendability and metal core offer unmatched strength and longevity, outlasting any paper-based material in the market.

Built to endure India's harshest climates, our Metal-Based HPL comes with a **12-year warranty**, guaranteeing superior performance. No wonder it's gaining popularity across industries for its style, strength, and sustainability!



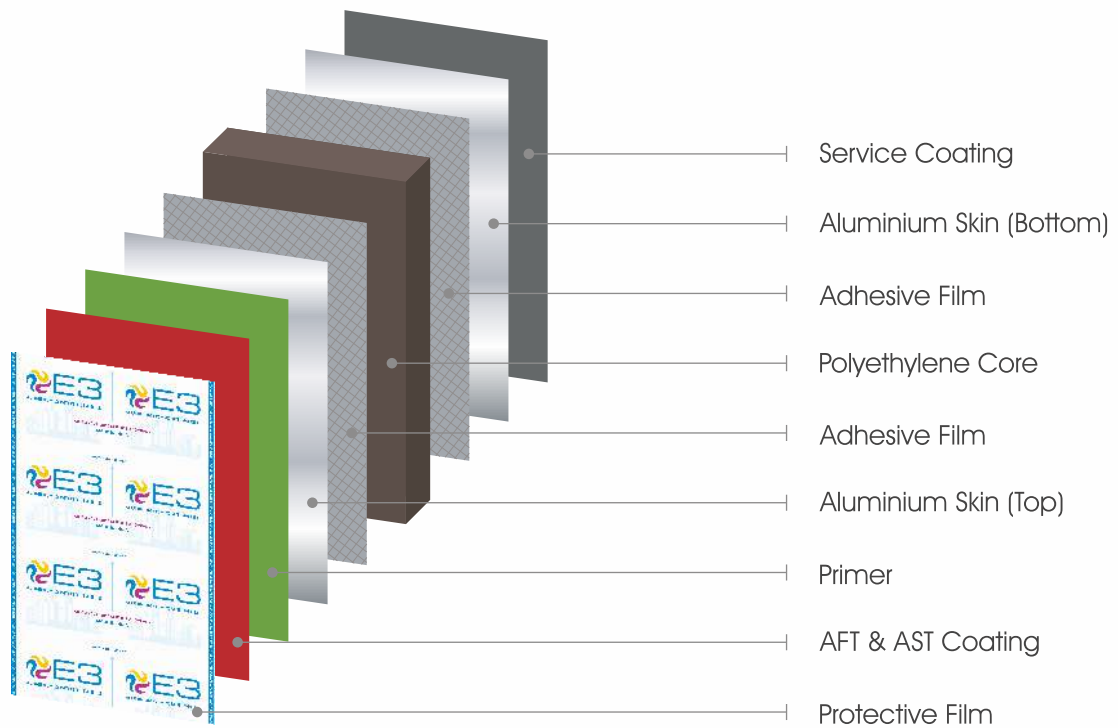
Features

Some striking characteristics of E3 Aluminium Composite Panels

Waterproof	Easy to Install	Durability	Termite Proof	UV Resistant	Light Weight
Anti-Scratch Technology	Swelling or Shrinkage Free	Environment Friendly	Wide Range of Colours & Patterns	Easy to Clean	90° Bendable

Variants

Composition



We are there where you are!!

E3 is a industry leader with borderless availability. Connected by a strong network of professionals who strive to provide quality services & solutions, we strive to make the availability of the architectural products simple yet accessible for all. In a short span we spread across the length and breadth of the nation.

Applications

OUTDOOR CLADDING

GATE ELEVATION

BALCONY CLADDING

WALL CLADDING

ATTIC CLADDING

LOUVERS

CANOPY

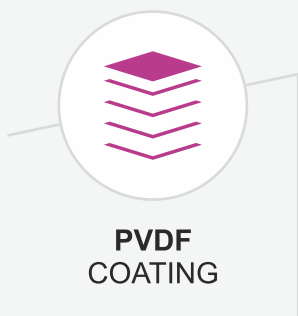
PERGOLA

RAFTERS

CEILING

FENCES

RAILING



Technical Specification

Product Grade	Titanium	Turbo	Energy	HPL
Panel Dimensions	2440x1220mm 3050x1220mm 3660x1220mm	2440x1220mm 3050x1220mm 3660x1220mm	2440x1220mm 3050x1220mm 3660x1220mm	2440x1220mm 3050x1220mm 3660x1220mm
ACP Thickness	4.00mm	4.00 / 3.00mm	4.00 / 3.00mm	6.00mm
Aluminium Alloy	Aa3003 / Aa5005	Aa3003	Aa3003	Aa3003
Coating Type	PVDF	PVDF	PVDF	HDPE / PVDF / SDP
Coating Thickness	25-28 μ (Two Coat-Two Bake) / 33-35 μ (Three Coat-Three Bake)			25-28 μ (Two Coat-Two Bake) / 33-35 μ (Three Coat-Three Bake)
Service Coating Thickness	5 - 7 μ			
Coil Supplier	Litong Aluminum Industry Co. Ltd			
Product Tolerance	Panel Length \pm 4.0 mm, Panel Width- \pm 2.0 mm Panel Thickness \pm 0.2 mm, Coil Thickness \pm 0.03 mm			

*Shade Variance may vary on batch shade may vary from batch to batch

*Please match the batch number before installation. Company liability does not arise if the shades mis match due to batch variation.



TIMELESS COLLECTION



E : 804
SMOKED ASH
NEW SHADE



E : 806
SHADOW RUST
NEW SHADE



Also Available in 6mm HPL

raw beauty,
polished to
Perfection



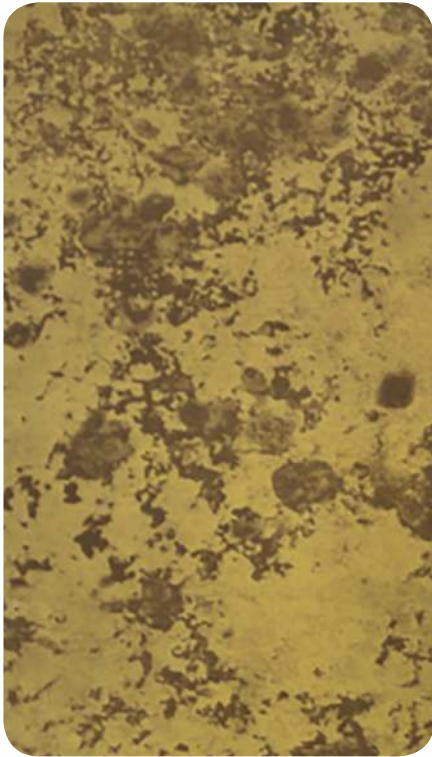
E : 807
COPPER GLOW
NEW SHADE



E : 808
SILVER DUST
NEW SHADE



Also Available in 6mm HPL



E : 801
TARNISHED BRASS
NEW SHADE



E : 802
COBALT RUST
NEW SHADE



Also Available in 6mm HPL



E : 803
RUSTIC BRONZE
NEW SHADE



E : 805
GOLD DUST
NEW SHADE



Also Available in 6mm HPL



Timeless
Elegance

ITALIAN STONE



E : 616
TURKISH STONE



E : 614
VENEZUELA STONE
NEW SHADE



E : 612
GRAPHITE STONE



E : 613
ALASKA STONE



E : 615
COPPER STONE



Also Available in 6mm HPL



E : 40
COUNTRY PINE
NEW SHADE



ANTI SCRATCH



E : 15
NOVACENTO PINE



Also Available in 6mm HPL

ANTI-SCRATCH



E : 16
AMERICAN OAK



E : 17
RUSTIC WALNUT



E : 18
GHANA WALNUT



E : 20
ROYAL TEAK



E : 21
COFFEE BEAN



E : 22
CAFFE BRAZILIAN



Also Available in 6mm HPL

ANTI-SCRATCH



E : 23
BRAZILLIAN TEAK



E : 24
BALINESE OAK



E : 25
TROPICAL TEAK



E : 27
RUGGED MAPLE



E : 31
VALCANIC OAK



E : 32
GOLDEN TEAK



Also Available in 6mm HPL

ANTI-SCRATCH



E : 34
NAGPUR TEAK



E : 36
INDONESIA TEAK



E : 37
TIGER TEAK



E : 39
GOLD RUSH TIMBER
NEW SHADE



Nature's
Beauty in Wood

Also Available in 6mm HPL



E : 35
NEW MAHAGONI



TIMBER WOOD



E : 10
BURMA TEAK



Also Available in 6mm HPL

TIMBER WOOD



E : 01
EBONY



E : 02
TINEO



E : 06
AMERICAN WENGE



E : 07
SAIM TEAK



E : 08
LAUREL WOOD



E : 11
SAPELE



Also Available in 6mm HPL

TIMBER WOOD



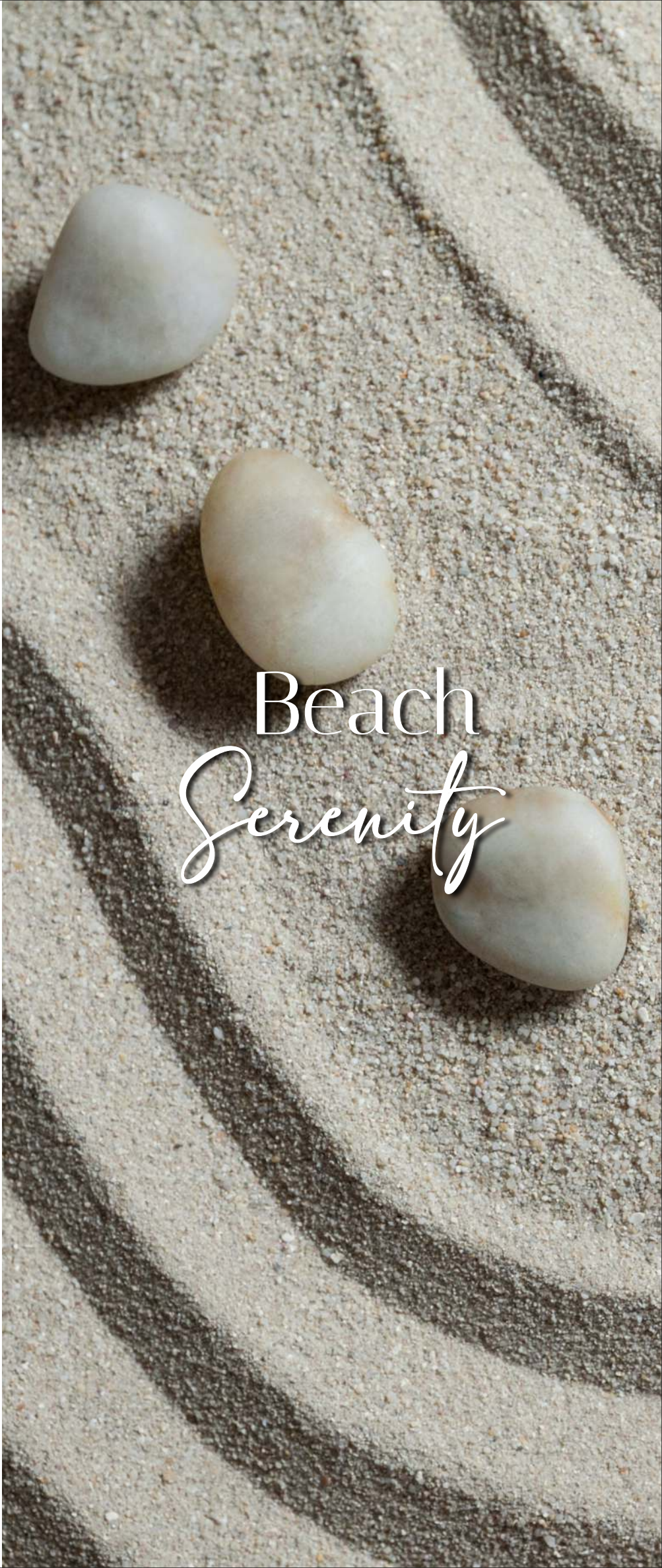
E : 13
BLACK EBONY



E : 14 ★
ROSE WOOD



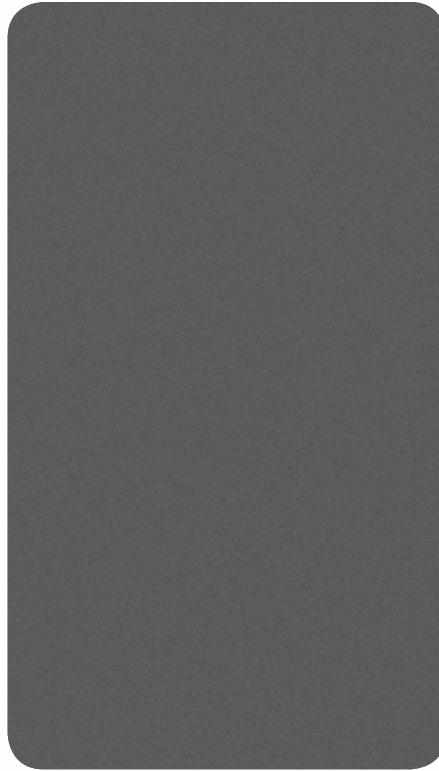
★ Also Available in Titanium Series (4mm 0.50, 6mm 0.25)



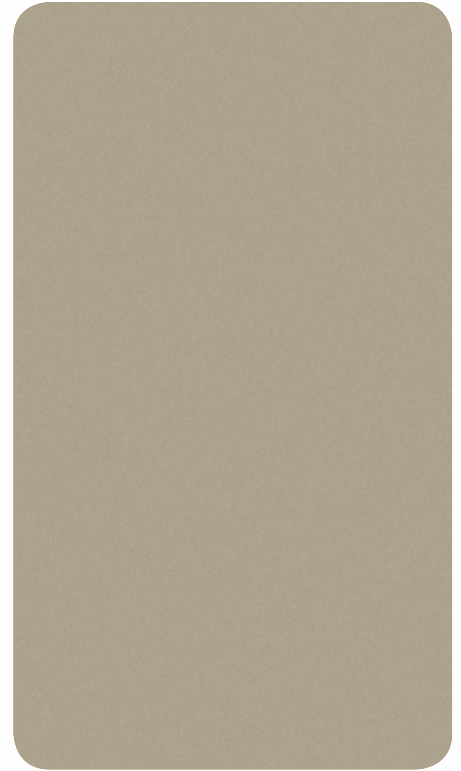
Beach
Serenity

SAND SERIES

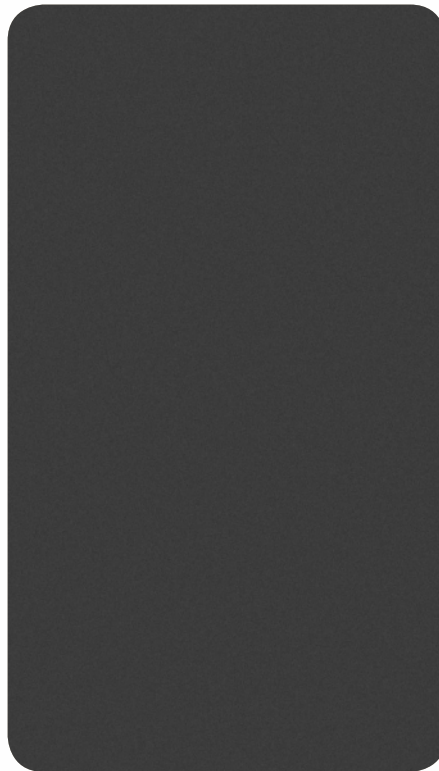
SAND SERIES



E : 902
LIGHT GREY



E : 903
DESERT SAND



E : 904
SHADOW GREY

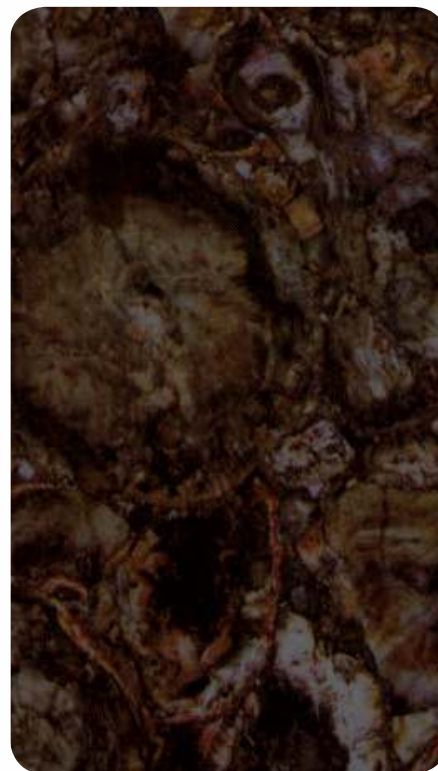




E : 605
SOFT PERLATO



PEBBLES



E : 603
BROWN FIRE



Also Available in 6mm HPL

PEBBLES



E : 610
EUROPEAN STATUARIO



E : 606
DARK EMPRADOR



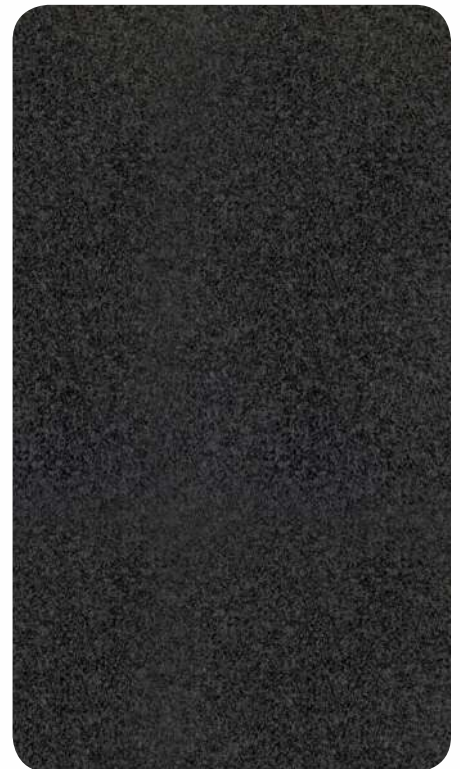
E : 607
MOLTEN GRANITE



E : 619
PEARL BROWN



E : 617
PEARL WHITE



E : 618
PEARL BLACK



Also Available in 6mm HPL

Spark of Inspiration

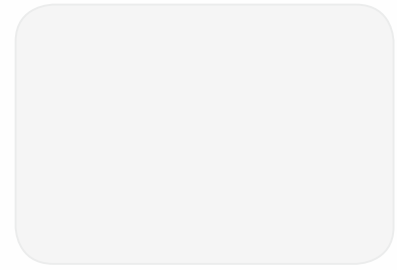
SPARKLE / MIRROR / BRUSH



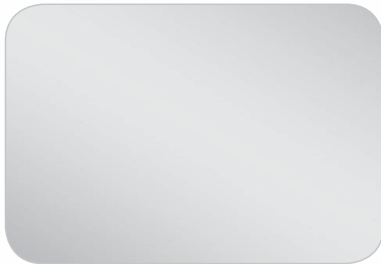
E : 707 SPARKLE RED



E : 709 SPARKLE BLACK



E : 710 SPARKLE WHITE



E : 511 SILVER MIRROR



E : 512 GOLD MIRROR



E : 514 ROSE GOLD MIRROR

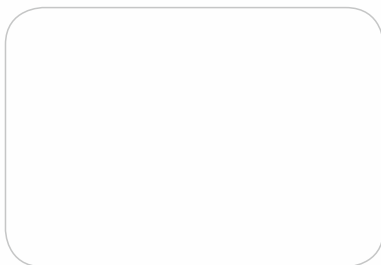


E : 513 SILVER BRUSH



E : 515 BUTLER STEEL

GLOSS



E : 124 GLOSSY WHITE



E : 130 GLOSSY ORANGE



E : 134 GLOSSY PINK



E : 137 GLOSSY RED



E : 143 GLOSSY BLACK

HIGH GLOSS



E : 211 HG-PEARL SILVER



E : 209 HG-METALLIC PEARL

PASTELS / METALLIC



E : 116 RED



E : 117 NAVY BLUE



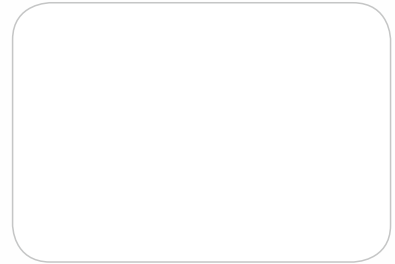
E : 118 POST GREEN



E : 119 ORANGE



E : 120 TRAFFIC YELLOW



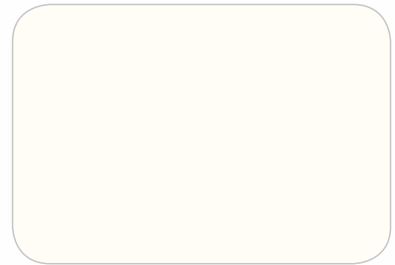
E : 121 OFF WHITE



E : 122 PURE WHITE ★



E : 123 CHOCOLATE BROWN



E : 125 IVORY ★



E : 126 BLACK



E : 127 BURGANDY



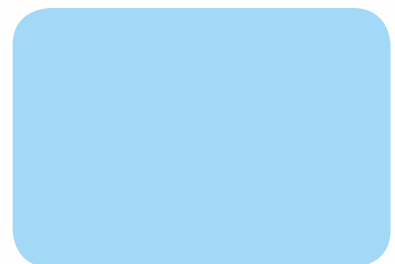
E : 128 LEMON YELLOW



E : 129 SLATE GREY



E : 131 SIGNAL BLUE



E : 132 LAKE BLUE



E : 133 EMERLAD GREEN



E : 135 REFRESHING GREEN



E : 136 SAMSUNG BLUE

★ Also Available in 4mm 0.50

PASTELS / METALLIC



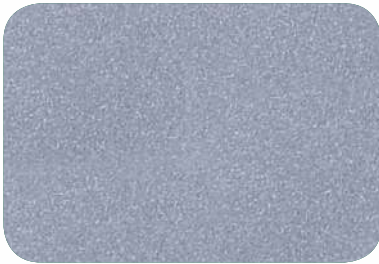
E : 141 OPPO GREEN



E : 142 PATANJALI GREEN



E : 154 DESERT SAND



E : 401 BRIGHT SILVER ★



E : 403 RICH GOLD



E : 404 METALLIC BLUE



E : 405 METALLIC SILVER ★



E : 406 METALLIC BRONZE ★



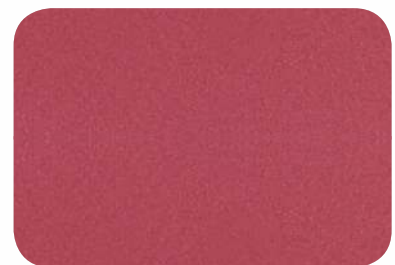
E : 407 COPPER METALLIC



E : 408 ANTIQUE COPPER



E : 409 METALLIC GREY ★



E : 411 WINE RED METALLIC



E : 412 LIGHT METALLIC BRONZE



E : 413 CHAMPAIGN GOLD ★



E : 415 CLASSIC BURGANDY



E : 416 ROYAL PURPLE

SHADES MAY DIFFER BETWEEN BATCHES

Always match the batch numbers before installation.
Shade variations due to batch differences are not covered by company liability.

[(ANY PANTONE/ RAL SHADES), SIZE THICKNESS, & ALUMINIUM ALLOYS
(1100,3003,5005)]

★ Also Available in 4mm 0.50



E3 FIRE

GUARD ACP

With the dynamic environment in our upcoming estate, fire retardant material is a basic requirement that one should follow. Fire insurance has been a dominant focal point over the rising number of rational consumers across the globe.

With the onset of global warming and climate change, utilising certified FR grade material is a must for the well-being of the Fire Rated Construction System.

To this, E3 presents THE FIRE GUARD ACP, a one-stop solution for FR grade wall panels.

BUILDING MORE

Than Designs, Creating Lasting Legacies



FOR **FREE 3D RENDERINGS**
CONTACT OUR AREA SALES MANAGER



ORLANDO



2900MM

219MM

VALENCIA



MILAN



BERLIN

ANY LENGTH CAN BE MADE ON ORDER



Waterproof



Termite Proof



Easy to Install



Easy to Clean



UV Resistant



Durability



Wide Range of Colours & Patterns



Anti-Fade Technology



Swelling or Shrinkage Free



Anti-Scratch Technology



E3 WPE Exterior Clads explores creative ideas and cutting-edge technology to reimagine tomorrow for a better and richer experience. Incepted this year in 2023, E3 Exterior Clads is quickly becoming an overnight success as an eco-friendly brand of Clads. Bespoke WPE exterior CLADS have lovely textures like wood finishes inspired by nature and kaleidoscopic graphic elements that look good on wall panelling and other places, making your living and working quarters classy. We at E3 believe that your outdoor space should be an extension of your personality. We remain open to new ideas and expertise to build workable designs that stay under budget.

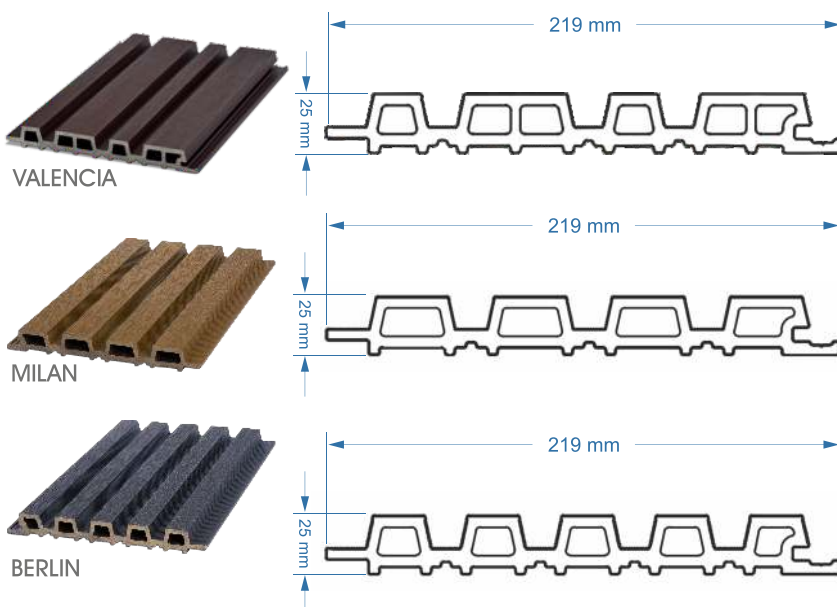
SPECIFICATIONS

COMPOSITION	WPE (TIMBER FIBRE + HDPE AND ADDITIVES)
DIMENSIONS	2900 mm x 219 mm x 25 mm
AREA/PANEL	6.84 sqft/Panel
PANELS/BOX	4 Panels/Box
WEIGHT OF BOX	41 KG
WEIGHT OF PANEL	9.8 KG
FIRE RESISTANCE	YES
TERMITE RESISTANCE	YES
WATER RESISTANCE	YES
INSTALLATION METHOD	TONGUE & GROOVE WITH STAINLESS STEEL CLIPS/CHANNEL

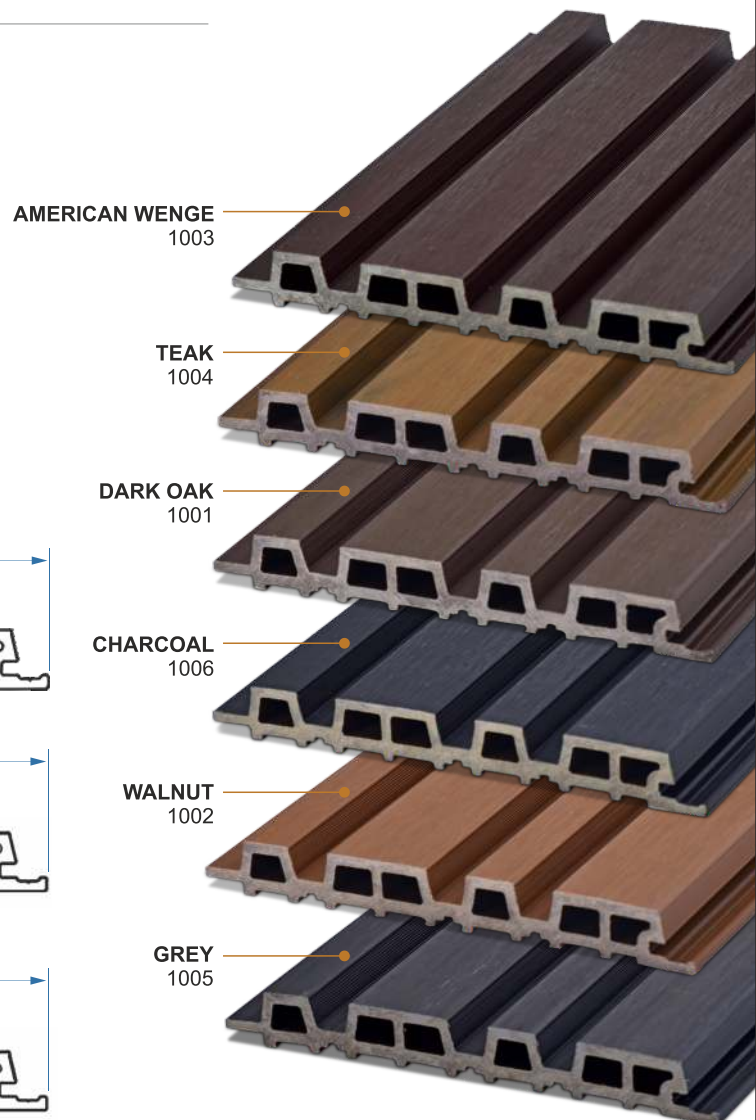


- Color may slightly vary from batch to batch.
- Total weight of the product can have a normal variation of $\pm 5\%$
- We reserve the right to amend the above specification without prior notice with changes in raw material supplies.

MOULDS OPTIONS



COLOR OPTIONS





E3 GROUP



ACP PROFILE



HPL PROFILE



CLADS PROFILE



GROUP PROFILE

E3 Panel Industries

Corporate Office

D-12/2, Okhla Industrial Area, Phase II, New Delhi - 110020

Works

Plot No-4 Ecotech, Greater Noida - 201308, UP

Branch Office

Ahmedabad, Bangalore, Bhubaneswar, Calcutta, Chandigarh, Chennai, Cochin, Dehradun, Delhi, Guwahati, Hindupuram, Hyderabad, Indore, Jaipur, Kanpur, Lucknow, Mumbai, Noida, Patna, Pune, Raipur, Ranchi, Surat, Udaipur, Visakhapatnam, Zirakpur.

Customer Care : 93109 34090

Email : acp@e3panels.com

Website : www.e3acp.com, www.e3groupindia.com

For Design Inspiration Follow Us @

