



# E3

elegant | everlasting | economical

# ARTESA

## PRE-LAM

### HDMR & MDF

WITH MATCHING  
EDGE BANDS & LAMINATES



Ye Righta  
Lamba  
Chalega



IS : 12406



CM/L 8300176809

IS : 14587



CM/L 8300176716



ABOUT THE GROUP

**Success at E3 Group is all about the right combinations:** Where delighting consumers sparks imagination, curiosity arouses creativity, and innovation provides opportunities. Together we break new ground and dare to create surprising products, repeatedly causing the observer to marvel at our creations. That is our unifying mission.

**E3 Group** is the leading manufacturer of interior and exterior products with more than 6000 dealer's network in PAN INDIA. **E3 Facilities** are fully equipped with state-of-the-art technology and modern infrastructure. E3 believes in "Made in India" world-class quality products by "Delivering promise and exceeding expectations".

**E3 GROUP** is the Leading Surface Product Manufacturer of

**INTERIOR RANGE**

- HDMR | MDF
- Edge Band
- Clads Seamless Panel
- PVC Laminates
- Decorative Laminates
- Acrylic Laminates & Panels
- Modular Kitchen & Wardrobes
- Hardware (Drawer Channel & Hinges)
- Plywood
- PU Stone
- Soffit Panels

**EXTERIOR RANGE**

- ACP
- HPL
- Exterior WPE Clads
- Artificial Grass
- Sports Turf
- Polycarbonate Sheets
- Exterior WPE Decking



DOWNLOAD  
GROUP PROFILE





## E3 PRE-LAM PRODUCT RANGE

OSL	One-side laminated	OSB	One-side Balancing
BSL	Both-side laminated	BSB	Both-side Balancing
OSD	One-side Decorative		

## ALL E3 PRE-LAM RANGE IS AVAILABLE WITH



## PRODUCT SPECIFICATIONS

Finishes: Suede and Matt | Thickness: 2 mm - 25 mm | Size: 2440mm×1220mm

## PRODUCT FEATURES

DURABLE	CARPENTER FRIENDLY	FULL THICKNESS
SUITABLE FOR INTERIOR USE	EASY TO CLEAN	<b>100%</b> PHENOLIC BONDING



**100%** MATCHING  
EDGE BANDS & LAMINATES

IS : 12406



CM/L 8300176809



DOWNLOAD  
ARTESA PRE-LAM  
SHADE CARD

IS : 14587



CM/L 8300176716

# NEW ARRIVALS

NEW



Matching Edge Band: 2232

E 189

BRISTLING WALNUT LIGHT

NEW



Matching Edge Band: 2233

P 190

ARIZONA OAK LIGHT

NEW



Matching Edge Band: 2234

E 191

BRISTLING WALNUT DARK

NEW



Matching Edge Band: 2235

P 192

ARIZONA OAK DARK



NEW



P 193

PARIA OAK

NEW



P 194

GRENEA PINE

Matching Edge Band: 2316

Matching Edge Band: 2318

NEW



P 195

MERANA WOOD

NEW



E 196

BRUSSEL WOOD

NEW



E 197

AESTHETIC DUNE

Matching Edge Band: 2236

Matching Edge Band: 2237

Matching Edge Band: 2238

NEW



E 198

PERSIAN OAK

NEW



E 199

DUSKY WOOD

NEW



E 200

ALBERTA BEACH

Matching Edge Band: 2239

Matching Edge Band: 2240

Matching Edge Band: 2241



Matching Edge Band: 2201

E 201 EUROPEAN TEAK



Matching Edge Band: 2202

E 202 FRENCH OAK



Matching Edge Band: 2203

E 203 GERMAN OAK



Matching Edge Band: 2204

E 204 ALASKA DARK



Matching Edge Band: 2205

E 205 ALASKA LIGHT



Matching Edge Band: 2080

E 206 CLASSIC PLANKED



Matching Edge Band: 2207

E 207 NIAGRA OAK



Matching Edge Band: 2062

E 208 ACACIA (LIGHT)



Matching Edge Band: 2208

E 209 AMERICAN OAK



Matching Edge Band: 2061

E 210 ACACIA (DARK)



Matching Edge Band: 2209

E 211 PACIFIC WOOD



Matching Edge Band: 2210

E 212 HIGH LINE PINE



Matching Edge Band: 2211

P 213 ROYAL TEAK



Matching Edge Band: 2212

E 214 GREY WALNUT



Matching Edge Band: 2009

E 215 MANGFALL BEACH



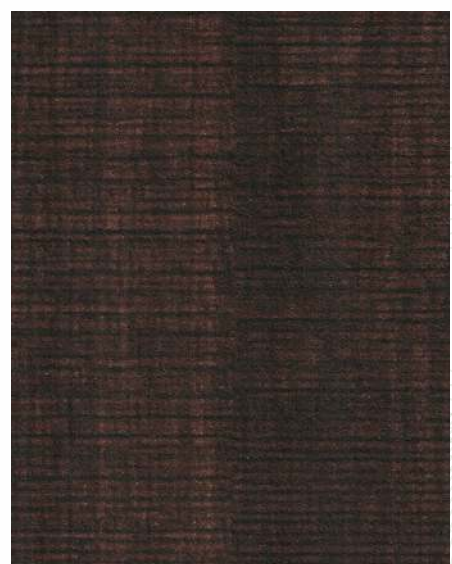
Matching Edge Band: 2226

E 216 BAVERIAN BEACH



Matching Edge Band: 2213

E 217 SAND CROSS LINE



Matching Edge Band: 2214

E 218 CHOCO CROSS LINE



Matching Edge Band: 2227

E 219

MAPLE WHITE



Matching Edge Band: 2095

E 220

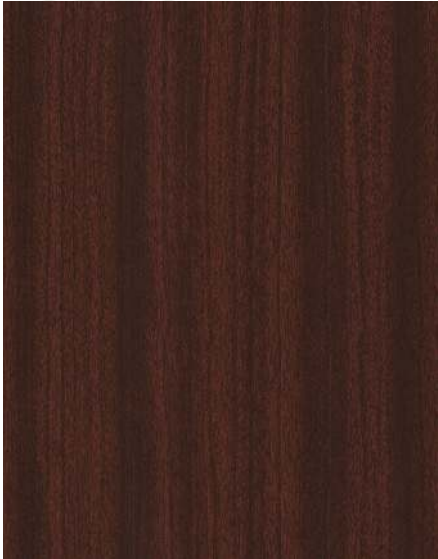
EVERGREEN TEAK



Matching Edge Band: 2215

E 221

OXFORD CHEERY



Matching Edge Band: 2058

E 222

MAHAGONY



Matching Edge Band: 2058

E 223

SAPELLE NEW



Matching Edge Band: 2217

E 224

ROSE WOOD



Matching Edge Band: 2041

E 225

N.T BROWN



Matching Edge Band: 2063

E 226

FL WENGE



Matching Edge Band: 2003

E 227

DARK WENGE





Matching Edge Band: 2049

E 228

CASTLE OAK



Matching Edge Band: 2004

E 229

SWARNA GOLD



Matching Edge Band: 2218

E 230

NOVACENTO PINE



MARBLE COLLECTION



P 231

PEARL

Matching Edge Band: 2219



E 232

ALASKA STONE

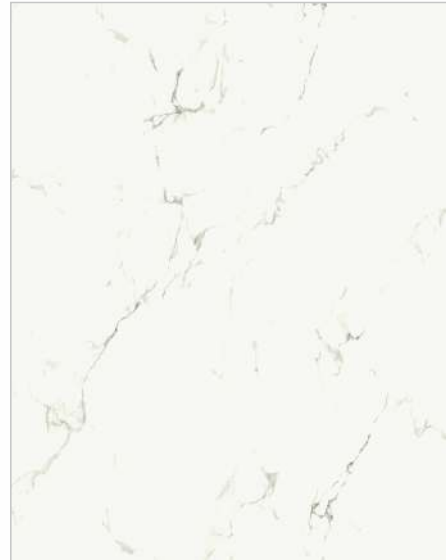
Matching Edge Band: 2220



E 234

DARK EMPRADOR

Matching Edge Band: 1006



P 233

STATUARIO

Matching Edge Band: 2522



E 235

MARBLE CHIPS

Matching Edge Band: 2221

# NEW ARRIVALS

NEW



Matching Edge Band: 2312

E 313

WARM FABRIC

NEW



Matching Edge Band: 2302

E 314

GREY FABRIC

NEW



Matching Edge Band: 2312

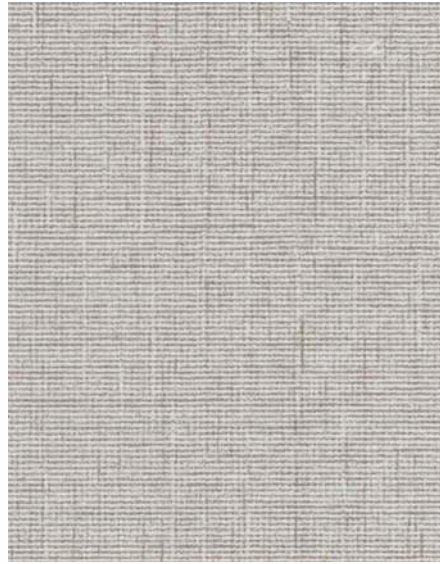
E 315

BRILLIANT WEAVE



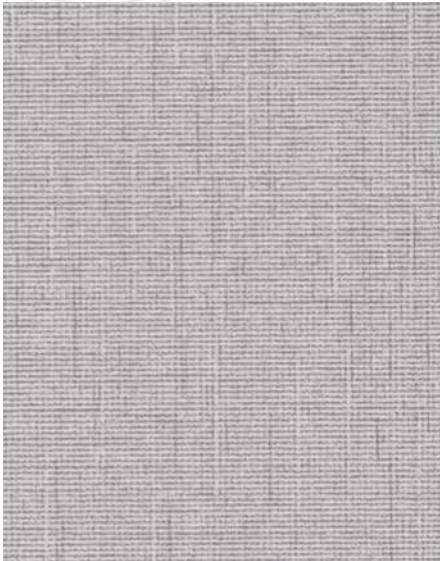
E 301 FAB CREAM

Matching Edge Band: 2222



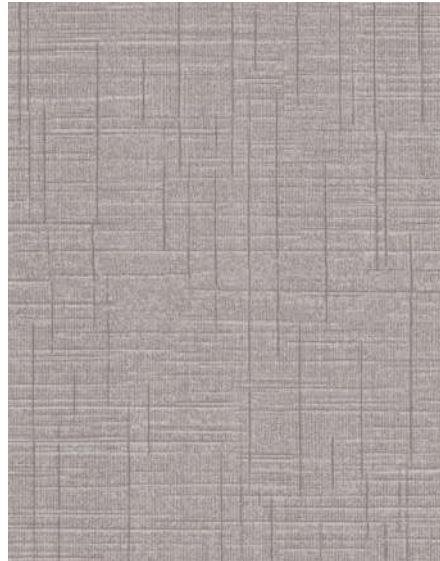
E 302 ROYAL KHADI

Matching Edge Band: 2223



E 303 KHADI GREY

Matching Edge Band: 2302



E 304 HAZEL FABRIC

Matching Edge Band: 2224



E 305 COLUDY CAMBRIC

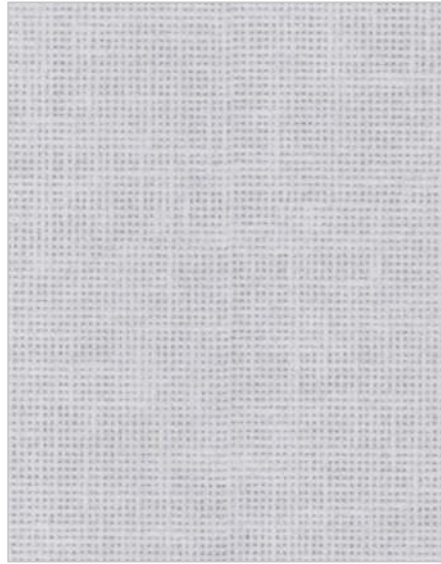
Matching Edge Band: 2225



E 306 CREAM CAMBRIC

Matching Edge Band: 2098

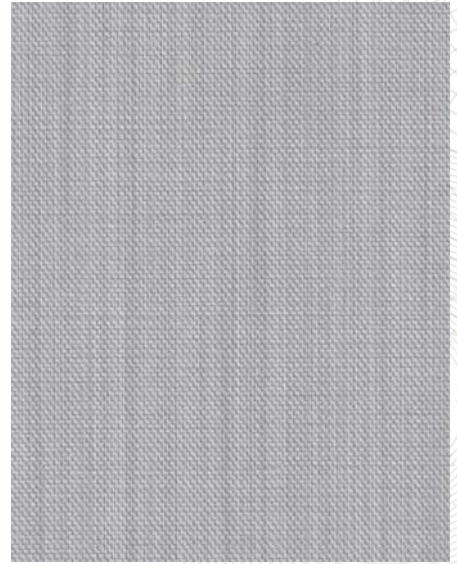




Matching Edge Band: 2100

E 307

MESH FABRIC



Matching Edge Band: 2339

E 308

LINEN GREY



Matching Edge Band: 2089

E 309

ROYAL FABRIC



Matching Edge Band: 2340

E 310

LINEN BROWN



Matching Edge Band: 2310

E 311

DUNE FABRIC



Matching Edge Band: 2310

E 312

TWILL DENIM



E 100 FROSTY WHITE / BSB

Matching EB:



E 101 SNOW WHITE

Matching EB: 1001



E 102 AQUA WHITE / BSB

Matching EB: 1101



E 103 SUPER WHITE / BSB

Matching EB: 1001



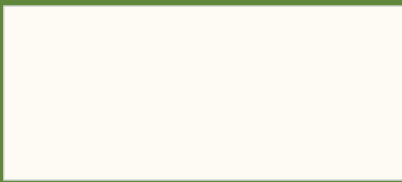
E 104 OFF WHITE

Matching EB: 1002



E 105 WARM WHITE

Matching EB: 1103



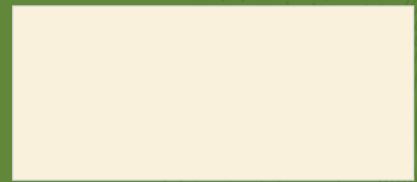
P 106 ROYAL WHITE

Matching EB: 1002



P 107 WOOL

Matching EB: 1002



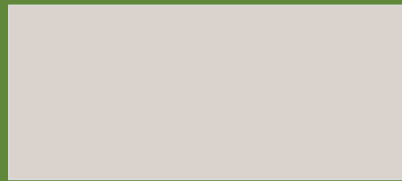
P 108 IVORY

Matching EB: 1033



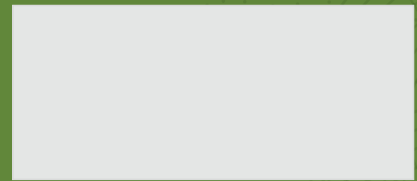
P 109 COFFEE

Matching EB: 1046



P 110 CAPPUCCINO

Matching EB: 1013



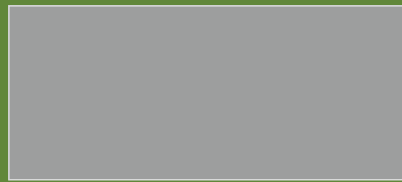
P 111 SILVER GREY

Matching EB: 1004



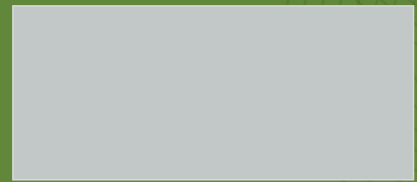
P 112 GOTHIC GREY

Matching EB: 1019



E 113 LIGHT GREY

Matching EB: 1051



E 129 SALT GREY

Matching EB:





P 114 SLATE GREY

Matching EB: 1005



E 115 DARK GREY

Matching EB: 1005



P 116 FOSSIL

Matching EB: 1107



P 117 ORANGE

Matching EB: 1015



P 118 PARROT GREEN

Matching EB: 1118



P 119 PINK

Matching EB: 1106



P 120 ELECTRIC BLUE

Matching EB: 1011



P 121 SUNFLOWER

Matching EB: 1007



E 122 KINGFISHER BLUE

Matching EB: 1011



E 123 CARNIVAL RED

Matching EB: 1009



E 124 CLASSIC BLACK

Matching EB: 1006



E 125 NAGPUR ORANGE

Matching EB:



E 126 EVERGREEN PINK

Matching EB:



E 127 YELLOW

Matching EB:



E 128 GREEN

Matching EB: 1018



## TECHNICAL SPECIFICATIONS

S.No.	Test	Unit	HDMR	Exterior	Interior	Boil Guard
1	Density	kg/m <sup>3</sup>	850-900	700-800	700-800	>1000
2	Variation from mean density	%	±10	±10	±10	±10
3	Moisture Content	%	4.0-8.0	4.0-8.0	4.0-8.0	4.0-8.0
4	Variation from mean moisture content	%	±3	±3	±3	±3
5	Thickness Swelling in 24 hrs (Max)	%	Up to 20	Up to 35	Up to 35	≤2
6	Modulus of rupture (Min)	N/mm <sup>2</sup>				
	a) Up to 20mm Thickness (Average)		30-35	22-27	18-23	>50
	b) Above 20mm Thickness (Average)		25-30	15-22	15-18	>48
7	Modulus of elasticity (Min)	N/mm <sup>2</sup>				
	a) Up to 20mm Thickness (Average)		2600-3200	2300-2800	2100-2800	>5500
	b) Above 20mm Thickness (Average)		2100-2600	1900-2300	1700-2100	>5000
8	Internal bond strength (Min)	N/mm <sup>2</sup>				
	a) Up to 20mm Thickness (Average)		0.90-1.20	0.60-0.70	0.55-0.65	>2.0
	b) Above 20mm Thickness (Average)		0.80-1.10	0.50-0.60	0.50-0.55	>2.0
9	Internal bond strength (Min)	N/mm <sup>2</sup>				
	a) After cyclic Test		0.12-0.35	0.10-0.35	NA	>1.0
	b) After AWR		0.12-0.20	0.10-0.20	NA	>1.0
10	Screw withdrawal strength (Min)	N				
	a) Face		3000	1250	1250	≥4000
	b) Edge		2300	850	700	≥2600
11	Surface abrasion (Min)					
	a) Type - 1		1000	1000	1000	1000
	b) Type - 2		450	450	450	450
	c) Type - 3		250	250	250	250
	d) Type - 4		75	75	75	75
12	Resistance to steam / water vapours		No blister, delamination or change in surface finish			
13	Resistance to Crack		No sign of crack or delamination			
14	Resistance to cigarette burn		No mark or stain on the specimen after cleaning with water or solvent			
15	Resistance to stain		No stain on the specimen after cleaning with water or detergent			
16	Formaldehyde content (Fc)	mg/100 g for oven dry board	Formaldehyde Class, E1 : Fc≤8			
			Formaldehyde Class, E2 : 8<Fc≤30			



Office : D-12 | 2, Okhla Industrial Area, New Delhi – 110020

Plant : Khasra No 1133, Mahukhera Ganj, Kashipur, Uttarakhand 244713



[www.e3mdf.com](http://www.e3mdf.com)

[www.e3groupindia.com](http://www.e3groupindia.com)



[info@e3mdf.com](mailto:info@e3mdf.com)



DOWNLOAD  
GROUP PROFILE



DOWNLOAD  
ARTESA PRE-LAM  
SHADE CARD